

Guide to Electric and Natural Gas Utilities in South Carolina

Based on data from 2012

A report by:
The South Carolina Energy Office
South Carolina Budget and Control Board



Guide to Electric and Natural Gas Utilities in South Carolina

Based on data from 2012

Prepared by Jacob Scoggins

Published April 2014 by the South Carolina Energy Office,
a division of the South Carolina Budget and Control Board

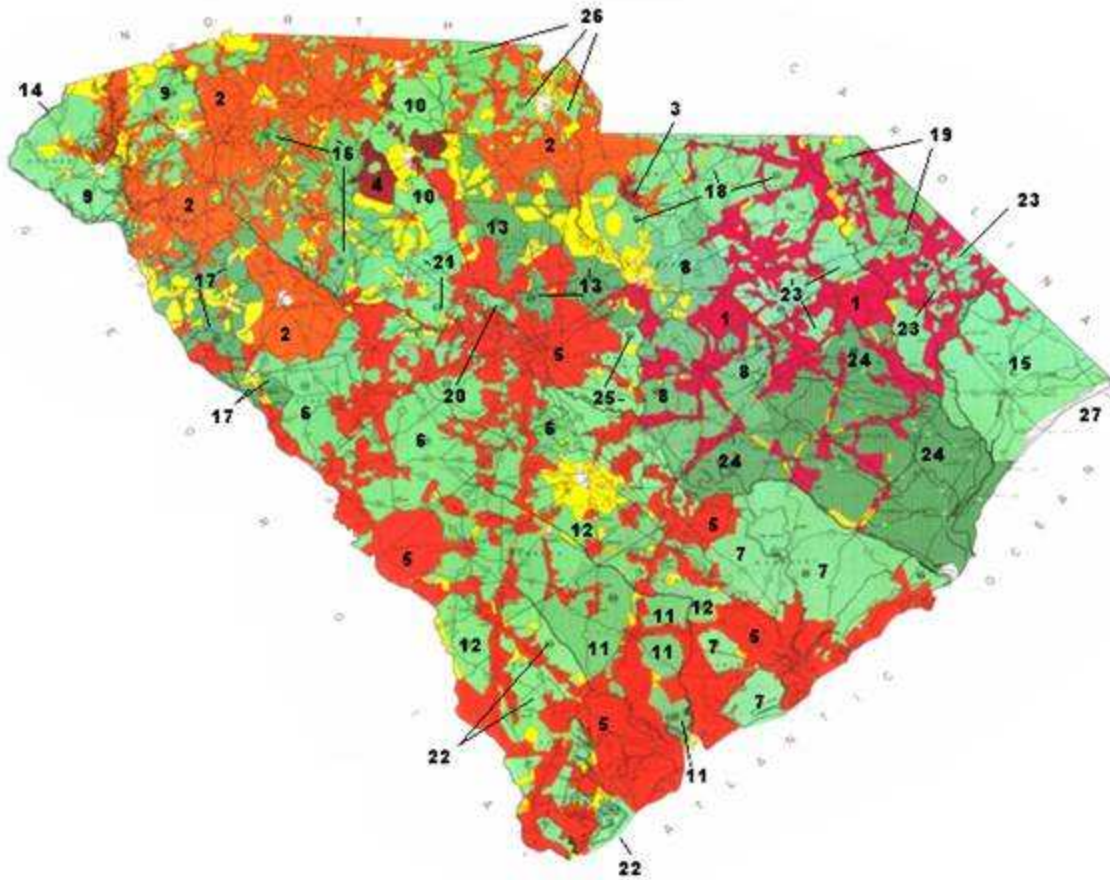
1200 Senate Street
408 Wade Hampton Building
Columbia, SC 29201
(803) 737-8030
<http://energy.sc.gov>

This report was prepared with the support of the U.S. Department of Energy (DOE), Grant No. DE-EE0003884, State Energy Program, administered by the South Carolina Energy Office (SCEO). However, any opinions, findings, conclusions, or recommendations expressed herein are those of the SCEO and do not necessarily reflect the views of the DOE.

Table of Contents

A.	Overview	v
B.	Electric and Natural Gas Utilities in South Carolina	vi
C.	South Carolina Utility Ownership	vii
	<u>Electric Utilities</u>	
1.	Electric Customers (2012)	1
	- Graph: Electric Utility Market Share – Customers (2012)	2
2.	Electric Revenue (2012)	3
	- Graph: Electric Utility Market Share – Revenue (2012)	4
3.	Electric Sales (2012)	5
	- Graph: Electric Utility Market Share – Sales (2012)	6
4.	Average Electric Revenue per Customer (2012)	7
	- Graph: Electric Utility Average Revenue per Customer per Kilowatt-hour (2012)	8
5.	Green Power Customers (2012)	9
6.	Green Power Revenue (2012)	10
7.	Green Power Sales (2012)	11
8.	Net Metering Customers (2012)	12-13
9.	Net Metering Customer Power Sold to Grid (2012)	14-15
10.	Automatic Meter Reading (AMR) Residential and Commercial Customers (2012)	16
11.	Automatic Meter Reading (AMR) Industrial Customers and Totals	17
12.	Smart Meter/Advanced Metering Infrastructure (AMI) Customers (2012)	18
13.	Electric Demand Side Management Programs (2012)	19
	<u>Natural Gas Utilities</u>	
14.	Natural Gas Customers (2012)	20
	- Graph: Natural Gas Utility Market Share – Customers (2012)	21
15.	Natural Gas Revenue (2012)	22
	- Graph: Natural Gas Utility Market Share – Revenue (2012)	23
16.	Natural Gas Sales (2012)	24
	-Graph: Natural Gas Utility Market Share – Sales (2012)	25
17.	Average Natural Gas Revenue per Customer (2012)	26
	-Graph: Natural Gas Average Revenue per Customer per Thousand Cubic Feet (2012)	27
18.	Natural Gas Demand-Side Management Programs (2012)	28

South Carolina Assigned Electric Distribution Service Area (2012)



- | | | | | |
|----|-------------------------------------------------|----|-----------------------------------|-----------------------------------------|
| 1 | Progress Energy | 16 | Laurens Electric Cooperative | |
| 2 | Duke Energy | 17 | Little River Electric Cooperative | |
| 3 | Lynches River EC - (formerly Heath Springs L&P) | 18 | Lynches Electric Cooperative | |
| 4 | Lockhart Power Company | 19 | Marlboro Electric Cooperative | |
| 5 | South Carolina Electric & Gas Company | 20 | Mid-Carolina Electric Cooperative | |
| 6 | Aiken Electric Cooperative | 21 | Newberry Electric Cooperative | |
| 7 | Berkeley Electric Cooperative | 22 | Palmetto Electric Cooperative | |
| 8 | Black River Electric Cooperative | 23 | Pee Dee Electric Cooperative | |
| 9 | Blue Ridge Electric Cooperative | 24 | Santee Electric Cooperative | |
| 10 | Broad River Electric Cooperative | 25 | Tri-County Electric Cooperative | |
| 11 | Coastal Electric Cooperative | 26 | York Electric Cooperative | |
| 12 | Edisto Electric Cooperative | | Unassigned Area | |
| 13 | Fairfield Electric Cooperative | | 27 | South Carolina Public Service Authority |
| 14 | Haywood Electric Cooperative | | | Municipally Owned Electric System |
| 15 | Horry Electric Cooperative | | | |

Note: Haywood Electric Cooperative is a North-Carolina based utility and, although it serves a very small number of South Carolina customers, is excluded from this report.

A. Overview

This report is intended to serve as a customer-focused guide to South Carolina's retail electricity and natural gas distribution utilities, based on the most current publicly-available data. The following data are included in this report:

- **Customer, Revenue, Sales, and Average Revenue per Customer** data are presented for all electric and natural gas utilities. "Average Revenue per Customer" is calculated by dividing a utility's annual revenue by its annual sales. While this has in the past been called "average price," actual utility rate schedules may vary depending on a customer's particular usage characteristics and preferences.
- **Green Power Customer, Revenue, and Sales** data are presented for electric utilities offering active "Green Power" programs. These programs provide utility customers the opportunity to pay extra for electricity generated from renewable energy resources such as wind, solar, and landfill gas. Green power data for Lockhart Power Company is not reflected in this report. However, 90% of the company's retail load is generated from renewable resources. The green power section accounts only for utilities that offer a green pricing program through which customers pay extra for "blocks" of green power. Lockhart Power's renewable generation falls under the company's normal rate schedule.
- **Net Metering Customer and Purchases** data are presented for electric utilities offering active "Net Metering" programs. These programs allow utility customers to sell surplus electricity that they generate back to their utility, helping them to save money on their electric bill.
- **Automatic Meter Reading (AMR) and Advanced Metering Infrastructure (AMI)** data are presented for electric utilities currently using AMR and/or AMI. AMR allows utilities to read customer meters remotely, reducing the cost of meter reading and permitting utilities to offer time-of-use pricing. AMI, including "smart meters", enables two-way communication between customer meters and utility companies, often providing customers with greater ability to control their energy costs and participate in utility demand response programs.
- **Demand-Side Management Programs** are listed for all electric and natural gas utilities. Demand-Side Management, or "DSM", is a strategy that electric and natural gas utilities employ to decrease the demand for, and cost of, their energy services. DSM programs usually provide financial incentives for customer participation, such as bill credits or reduced utility rates. DSM can target customer usage continuously ("Energy Efficiency") or during periods of peak demand ("Load Management"), and may rely on provision of information to encourage changes in customer behavior ("Public Information").

The data in this report were provided by the U.S. Energy Information Administration (www.eia.gov). The information about DSM programs was collected through an annual survey conducted by the South Carolina Energy Office ("SCEO"). Due to changes in EIA data collection methods, small electric utilities now only report individual sector data every 5 years. These utilities are followed by an asterisk (*) in this report. In these cases the most recent previous year reported data is used. Overall totals are current as of 2012.

The SCEO serves as South Carolina's clearinghouse for energy data and analysis. In addition, the SCEO provides a number of services to help South Carolinians reduce their energy expenses and develop clean, indigenous energy resources. For more information about the SCEO, please visit www.energy.sc.gov or contact the office at (803) 737-8030.

B. Electric and Natural Gas Utilities in South Carolina

Retail customers in South Carolina are currently served by 46 electric distribution utilities and 15 natural gas distribution utilities. Each utility is granted exclusive rights to retail service provisions within its respective service area. Service areas often traverse state lines—several utilities with headquarters in South Carolina also serve customers in neighboring states, and several utilities with headquarters outside of South Carolina also serve customers within the state.

In 2011, there were four investor-owned electric utilities and two investor-owned natural gas utilities operating in South Carolina. In 2012, Duke Energy and Progress Energy merged, leaving only three investor-owned utilities in the state. However, they continue to report separately to the EIA, and are shown separately in this report. Investor-owned electric utilities generate the majority of their electricity through company-owned power plants and sell electricity to retail customers in their designated service areas as well as to various wholesale customers. The rate structures and customer services of investor-owned utilities are regulated by the South Carolina Public Service Commission (“PSC”) and its independent administrative counterpart, the South Carolina Office of Regulatory Staff (“ORS”). You can learn more about South Carolina’s investor-owned electric utilities through their annual Integrated Resource Plans, available online at <http://energy.sc.gov/index.aspx?m=49&t=146>.

South Carolina has one state-owned utility—the South Carolina Public Service Authority, more commonly known as Santee Cooper. Santee Cooper generates and supplies power to the state’s electric cooperatives as well as to several municipal electric utilities. It also directly distributes power to a large number of retail customers in Berkeley, Georgetown, and Horry Counties.

Twenty-one local governments in South Carolina currently own and operate their own electric distribution networks, while 13 local governments own and operate their own natural gas distribution networks. Municipal electric utilities purchase most of their electricity on the wholesale market, typically through contracts with the investor-owned utilities and Santee Cooper or through intermediaries such as the Piedmont Municipal Power Agency. Some municipalities also own their own electricity generating facilities. Municipal utilities are not subject to regulation by the PSC.

There are currently 20 electric distribution cooperatives based in South Carolina. These customer-owned utilities supply primarily rural service areas which have historically had high per-customer costs of service due to their low population density. Twenty local distribution cooperatives pool their costs by securing electricity through Central Electric Power Cooperative, Inc., which purchases power from Santee Cooper and other wholesale suppliers and delivers it to co-op service areas through its statewide transmission network. Electric cooperatives are not subject to regulation by the PSC.

C. South Carolina Utility Ownership

	Electric	Natural Gas
Investor-Owned Utilities	Duke Energy Carolinas, LLC [^] Lockhart Power Co. Progress Energy Carolinas, Inc. [^] South Carolina Electric and Gas Co.	Piedmont Natural Gas South Carolina Electric and Gas Co.
State-Owned Utility	South Carolina Public Service Authority (Santee Cooper)	
Municipal Utilities	Abbeville, City of Bamberg Board of Public Works Bennettsville, City of Camden, City of Clinton Combined Utility System Due West, City of Easley Combined Utility System Gaffney, City of Georgetown, City of Greenwood Commission of Public Works Greer Commission of Public Works Laurens, City of McCormick, Town of Newberry, City of Orangeburg, City of Prosperity, Town of Rock Hill, City of Seneca, City of Union, City of Westminster, City of Winnsboro, Town of	Bamberg Board of Public Works Bennettsville, City of Chester County Natural Gas Authority Clinton-Newberry Natural Gas Authority Fort Hill Natural Gas Authority Fountain Inn Natural Gas Greenwood Commission of Public Works Greer Commission of Public Works Laurens Commission of Public Works Orangeburg Department of Public Utilities Union, City of Winnsboro, Town of York County Natural Gas Authority
Cooperatives	Aiken Electric Coop, Inc. Berkeley Electric Coop, Inc. Black River Electric Coop, Inc. Blue Ridge Electric Coop, Inc. Broad River Electric Coop, Inc. Coastal Electric Coop, Inc. Edisto Electric Coop, Inc. Fairfield Electric Coop, Inc. Horry Electric Coop, Inc. Laurens Electric Coop, Inc. Little River Electric Coop, Inc. Lynches River Elec Coop, Inc. Marlboro Electric Coop, Inc. Mid-Carolina Electric Coop, Inc. Newberry Electric Coop, Inc. Palmetto Electric Coop, Inc. Pee Dee Electric Coop, Inc. Santee Electric Coop, Inc. Tri-County Electric Coop, Inc. York Electric Coop, Inc.	

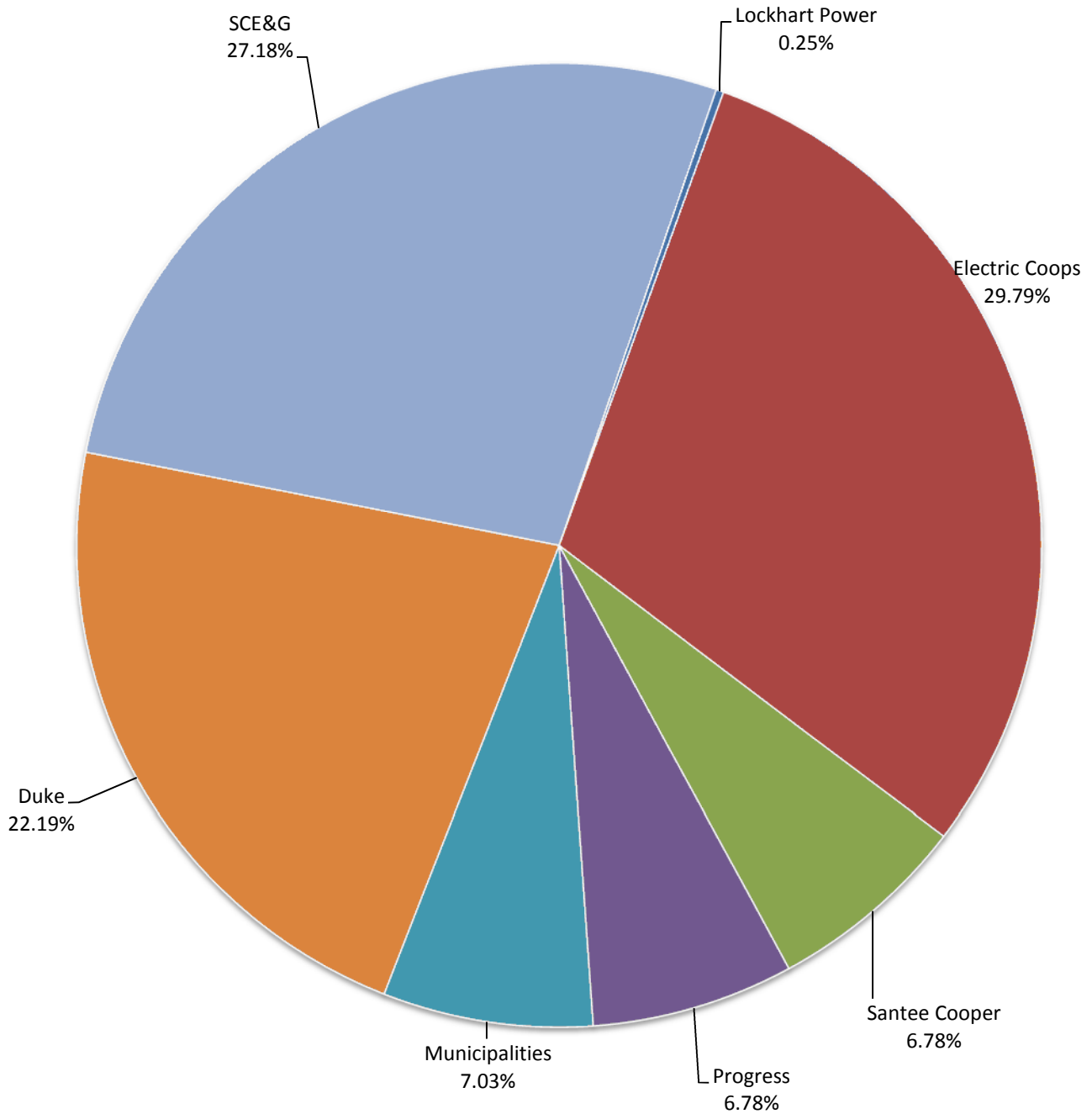
[^]Duke Energy and Progress Energy merged in 2012.

1. Electric Customers (2012)

	Residential Customers (#)	RANK	Commercial Customers (#)	RANK	Industrial Customers (#)	RANK	Total Customers (#)	RANK
Abbeville, City of*	2,973	41	503	40	0	-	3,506	41
Aiken Electric Coop, Inc	42,918	11	2,778	18	16	18	45,712	11
Bamberg Board of Public Works*	1,439	42	359	42	6	31	1,925	42
Bennettsville, City of	4,064	36	533	39	0	-	4,597	38
Berkeley Electric Coop, Inc	74,218	5	8,541	7	141	7	82,900	5
Black River Electric Coop, Inc	27,373	16	4,009	13	17	17	31,399	15
Blue Ridge Electric Coop, Inc	58,426	8	5,130	10	26	12	63,582	8
Broad River Electric Coop, Inc	19,089	20	961	32	4	33	20,054	20
Camden, City of	9,316	29	1,403	24	0	-	10,719	29
Clinton Combined Utility System	3,476	39	595	37	9	27	4,080	39
Coastal Electric Coop, Inc	10,353	28	1,151	29	0	-	11,504	28
Due West, City of*	325	46	32	46	0	-	357	46
Duke Energy Carolinas, LLC	456,064	2	88,104	2	1,708	1	545,876	2
Easley Combined Utility System	11,713	26	1,892	21	0	-	13,605	26
Edisto Electric Coop, Inc	14,941	22	4,950	11	16	18	19,907	21
Fairfield Electric Coop, Inc	24,557	17	1,348	25	16	18	25,921	17
Gaffney, City of	5,575	32	1,592	23	31	9	7,198	31
Georgetown, City of	3,821	38	1,167	28	0	-	4,988	36
Greenwood CPW	10,961	27	2,590	19	243	5	13,794	25
Greer Commission of Public Works	14,003	23	4,017	12	0	-	18,020	22
Horry Electric Coop, Inc	58,683	6	9,296	6	14	21	67,993	7
Laurens Electric Coop, Inc	47,972	9	5,165	9	27	11	53,164	9
Laurens, City of	4,657	35	857	35	8	29	5,522	35
Little River Electric Coop, Inc	11,847	25	2,172	20	0	-	14,019	24
Lockhart Power Co.	4,985	34	1,265	26	9	27	6,259	34
Lynches River Electric Coop, Inc	19,574	19	895	33	10	26	20,479	19
Marlboro Electric Coop, Inc	5,338	33	1,189	27	6	31	6,533	33
McCormick, Town of*	902	44	173	44	0	-	1,078	44
Mid-Carolina Electric Coop, Inc	45,255	10	6,580	8	7	30	51,842	10
Newberry Electric Coop, Inc	11,915	24	719	36	18	16	12,652	27
Newberry, City of	4,049	37	865	34	12	22	4,926	37
Orangeburg, City of	20,504	18	3,530	14	316	4	24,350	18
Palmetto Electric Coop, Inc	58,558	7	9,675	5	25	13	68,258	6
Pee Dee Electric Coop, Inc	28,583	15	1,660	22	47	8	30,290	16
Progress Energy Carolinas, Inc	134,808	4	31,285	3	672	3	166,765	4
Prosperity, Town of*	671	45	118	45	0	-	812	45
Rock Hill, City of	30,012	14	3,497	15	11	25	33,520	14
Santee Electric Coop, Inc	40,919	13	3,042	17	20	14	43,981	13
Seneca, City of	6,606	30	1,091	30	2	34	7,699	30
South Carolina Electric and Gas Co.	574,222	1	93,775	1	722	2	668,719	1
South Carolina Public Service Authority (Santee Cooper)	138,353	3	28,456	4	28	10	166,837	3
Tri-County Electric Coop, Inc	17,363	21	410	41	159	6	17,932	23
Union, City of	5,887	31	1,086	31	12	22	6,985	32
Westminster, City of*	1,282	43	243	43	0	-	1,565	43
Winnsboro, Town of*	3,281	40	568	38	12	22	3,772	40
York Electric Coop, Inc	41,211	12	3,457	16	20	14	44,688	12

*Due to changes in EIA data collection, sector data for these utilities will only be collected every 5 years. Total customer counts are current.

South Carolina Electric Utility Market Share-Number of Customers (2012)



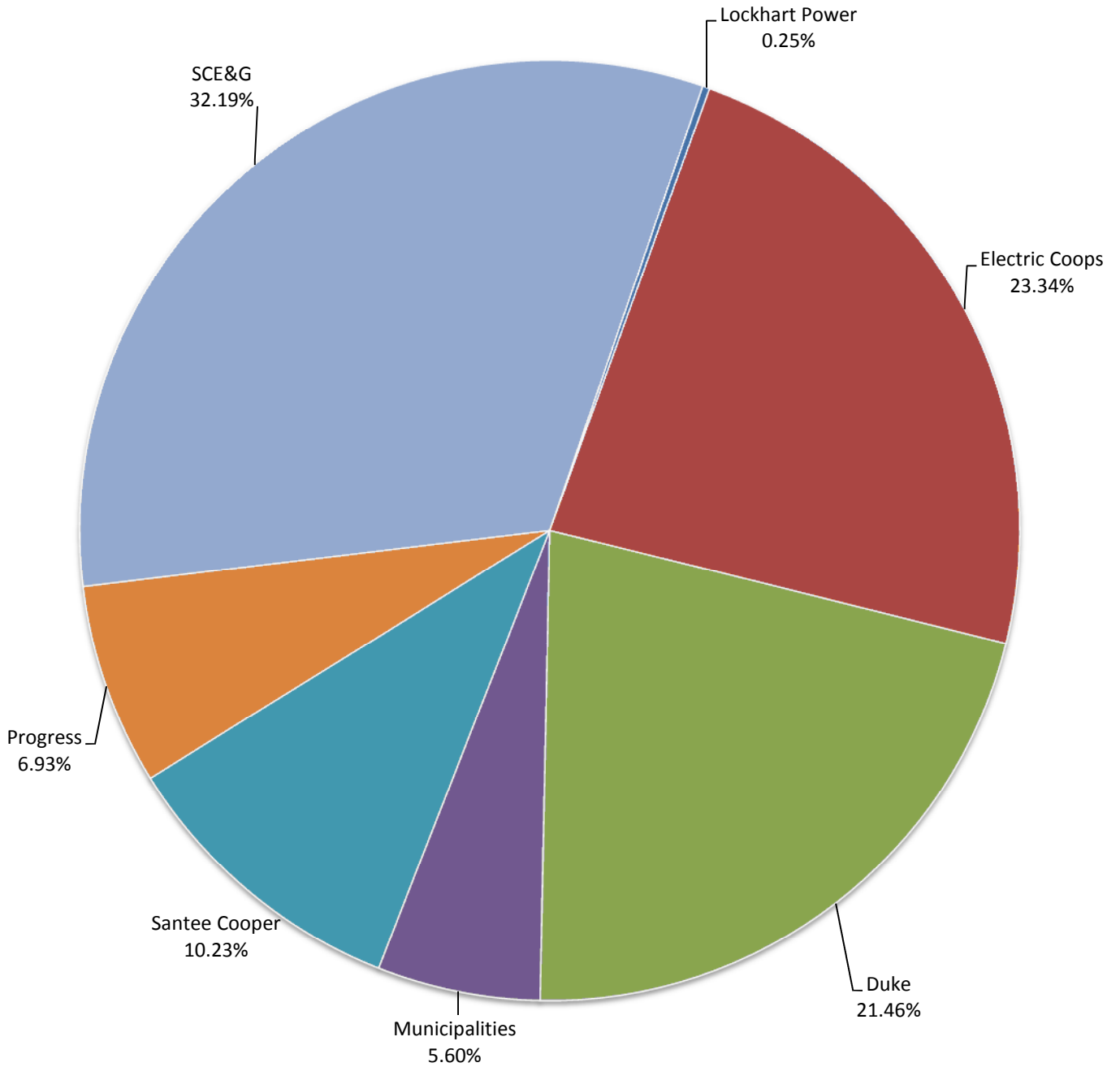
Data Source: U.S. Energy Information Administration, EIA-861

2. Electric Revenue (2012)

	Residential Revenue (\$000)	RANK	Commercial Revenue (\$000)	RANK	Industrial Revenue (\$000)	RANK	Total Revenue (\$000)	RANK
Abbeville, City of*	4,187	40	3,014	38	0	-	6,989	40
Aiken Electric Coop, Inc	76,641	11	13,947	15	12,660	11	103,248	12
Bamberg Board of Public Works*	2,139	42	1,994	41	704	31	4,924	42
Bennettsville, City of	5,330	36	3,112	37	0	-	8,442	39
Berkeley Electric Coop, Inc	137,627	5	27,812	8	34,065	8	199,504	5
Black River Electric Coop, Inc	47,728	15	11,745	16	9,730	14	69,204	17
Blue Ridge Electric Coop, Inc	94,765	7	21,147	11	7,398	17	123,310	9
Broad River Electric Coop, Inc	33,496	18	4,251	34	2,306	27	40,053	20
Camden, City of	10,978	28	8,120	21	0	-	19,098	32
Clinton Combined Utility System	5,097	38	5,721	29	3,415	25	14,233	36
Coastal Electric Coop, Inc	19,445	23	4,616	33	0	-	24,061	27
Due West, City of*	390	46	825	44	0	-	1,255	45
Duke Energy Carolinas, LLC	609,303	2	454,963	2	454,939	1	1,519,204	2
Easley Combined Utility System	17,328	26	15,338	13	0	-	32,666	24
Edisto Electric Coop, Inc	30,441	20	7,564	22	1,883	28	39,887	21
Fairfield Electric Coop, Inc	41,582	16	9,438	19	13,403	10	64,423	19
Gaffney, City of	6,682	33	10,486	18	3,694	23	20,862	30
Georgetown, City of	4,344	39	6,272	26	0	-	10,616	38
Greenwood CPW	9,865	30	4,113	35	9,953	13	23,931	28
Greer Commission of Public Works	17,095	27	15,157	14	0	-	32,252	25
Horry Electric Coop, Inc	103,286	6	22,188	9	3,566	24	129,040	7
Laurens Electric Coop, Inc	77,825	10	21,201	10	10,260	12	109,286	11
Laurens, City of	5,785	35	5,679	30	289	33	11,753	37
Little River Electric Coop, Inc	18,657	25	4,762	32	0	-	23,419	29
Lockhart Power Co.	7,916	31	2,487	40	6,972	19	17,374	33
Lynches River Electric Coop, Inc	28,613	21	5,544	31	4,097	22	38,254	23
Marlboro Electric Coop, Inc	10,182	29	2,574	39	53,120	5	65,876	18
McCormick, Town of*	1,350	44	768	45	0	-	1,902	44
Mid-Carolina Electric Coop, Inc	80,737	9	27,886	7	3,053	26	111,675	10
Newberry Electric Coop, Inc	19,305	24	3,232	36	7,471	16	30,008	26
Newberry, City of	5,304	37	7,138	25	7,485	15	19,927	31
Orangeburg, City of	27,381	22	7,296	23	35,969	7	70,647	16
Palmetto Electric Coop, Inc	93,526	8	48,394	5	7,178	18	149,098	6
Pee Dee Electric Coop, Inc	55,291	14	7,192	24	15,056	9	77,539	14
Progress Energy Carolinas, Inc	206,275	3	153,782	4	130,462	4	490,519	4
Prosperity, Town of*	728	45	353	46	0	-	1,158	46
Rock Hill, City of	34,520	17	37,951	6	4,867	21	77,338	15
Santee Electric Coop, Inc	75,045	12	11,734	17	41,695	6	128,475	8
Seneca, City of	6,594	34	8,352	20	116	34	15,061	34
South Carolina Electric and Gas Co.	1,032,370	1	834,301	1	412,510	2	2,279,181	1
South Carolina Public Service Authority (Santee Cooper)	163,146	4	171,253	3	389,742	3	724,141	3
Tri-County Electric Coop, Inc	31,964	19	5,745	28	592	32	38,301	22
Union, City of	7,712	32	6,156	27	897	30	14,765	35
Westminster, City of*	1,857	43	1,612	43	0	-	3,054	43
Winnsboro, Town of*	3,831	41	1,766	42	962	29	5,769	41
York Electric Coop, Inc	65,526	13	17,241	12	5,222	20	87,989	13

*Due to changes in EIA data collection, sector data for these utilities will only be collected every 5 years. Total revenue is current.

South Carolina Electric Utility Market Share-Revenue, in Dollars (2012)



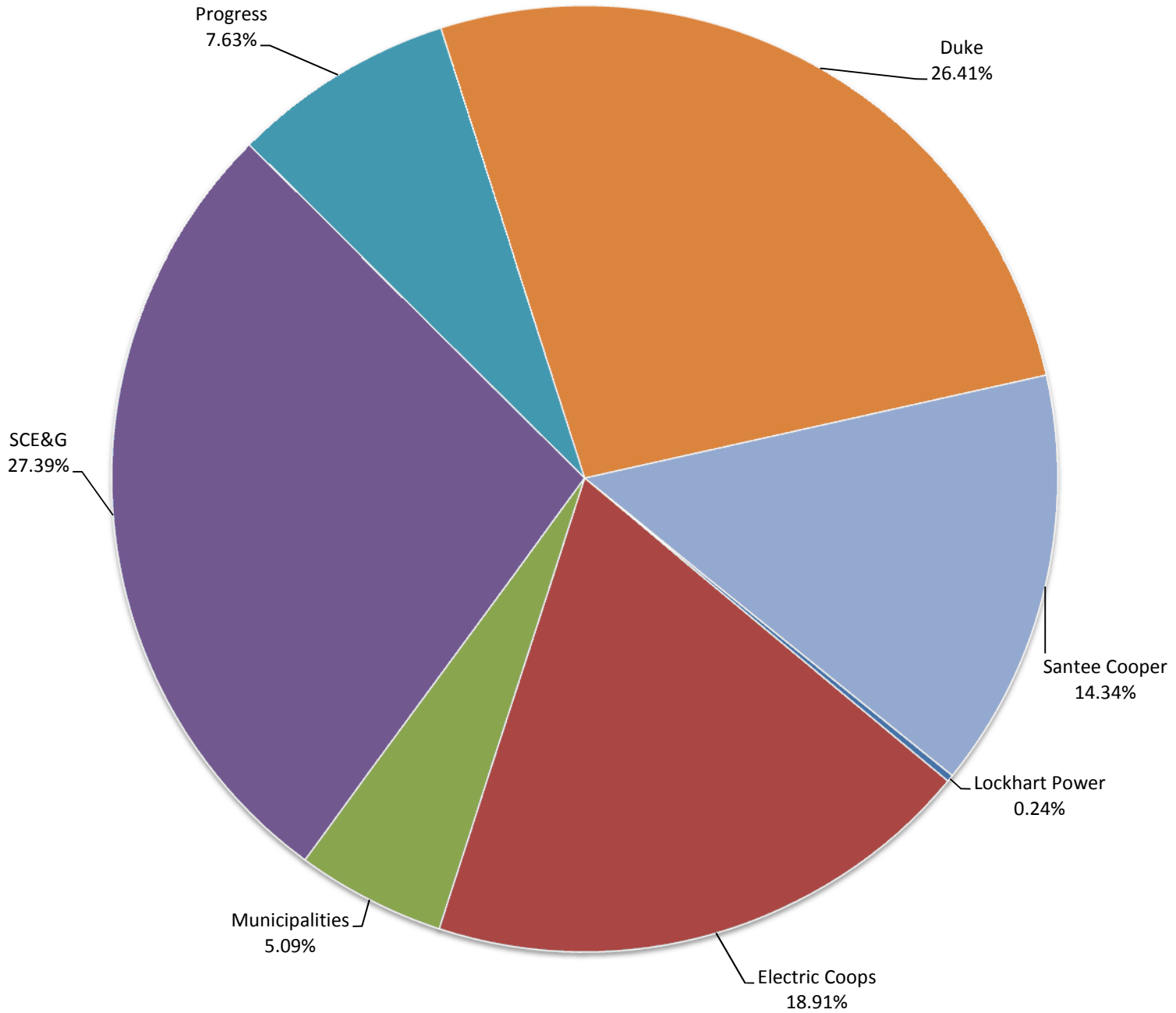
Data source: U.S. Energy Information Administration, EIA-861

3. Electric Sales (2012)

	Residential Sales (MWH)	RANK	Commercial Sales (MWH)	RANK	Industrial Sales (MWH)	RANK	Total Sales (MWH)	RANK
Abbeville, City of*	34,206	39	27,198	37	0	-	58,305	40
Aiken Electric Coop, Inc	575,042	11	126,363	15	171,965	11	873,370	13
Bamberg Board of Public Works*	21,096	42	20,748	39	8,610	31	47,977	42
Bennettsville, City of	46,750	35	40,611	33	0	-	87,361	39
Berkeley Electric Coop, Inc	1,145,858	5	236,171	8	429,630	7	1,811,659	5
Black River Electric Coop, Inc	438,892	14	100,811	16	128,804	13	668,507	17
Blue Ridge Electric Coop, Inc	712,669	8	213,729	9	83,652	18	1,010,050	8
Broad River Electric Coop, Inc	247,151	19	34,116	36	29,057	27	310,324	22
Camden, City of	98,909	29	67,960	23	0	-	166,869	33
Clinton Combined Utility System	33,449	40	41,042	31	33,422	26	107,913	37
Coastal Electric Coop, Inc	136,765	27	38,264	34	0	-	175,029	32
Due West, City of*	3,700	46	8,864	44	0	-	12,313	45
Duke Energy Carolinas, LLC	6,189,040	2	5,676,494	2	8,678,807	1	20,544,341	2
Easley Combined Utility System	151,687	25	136,887	14	0	-	288,574	25
Edisto Electric Coop, Inc	223,196	22	50,975	29	16,219	28	290,390	24
Fairfield Electric Coop, Inc	349,202	16	74,392	20	191,564	9	615,158	19
Gaffney, City of	67,296	32	99,678	17	49,963	23	216,937	28
Georgetown, City of	45,464	37	71,563	21	0	-	117,027	36
Greenwood CPW	108,086	28	40,656	32	146,062	12	294,804	23
Greer Commission of Public Works	167,257	23	165,104	12	0	35	332,361	21
Horry Electric Coop, Inc	799,895	7	172,538	11	36,310	24	1,008,743	9
Laurens Electric Coop, Inc	650,544	10	186,586	10	126,001	14	963,131	10
Laurens, City of	46,492	36	53,169	27	3,284	33	102,945	38
Little River Electric Coop, Inc	143,439	26	36,587	35	0	-	180,026	31
Lockhart Power Co.	64,605	33	20,296	40	98,321	15	183,222	30
Lynches River Electric Coop, Inc	243,595	20	49,356	30	50,990	22	343,941	20
Marlboro Electric Coop, Inc	80,002	30	18,975	41	791,155	5	890,132	12
McCormick, Town of*	11,420	44	6429	45	0	-	16,146	44
Mid-Carolina Electric Coop, Inc	657,737	9	249,023	7	35,816	25	942,576	11
Newberry Electric Coop, Inc	151,882	24	25,861	38	85,617	17	263,360	27
Newberry, City of	45,307	38	65,031	24	87,583	16	197,921	29
Orangeburg, City of	270,800	18	70,162	22	426,725	8	767,687	16
Palmetto Electric Coop, Inc	840,156	6	450,877	5	69,467	19	1,360,500	6
Pee Dee Electric Coop, Inc	418,466	15	54,955	26	181,774	10	655,195	18
Progress Energy Carolinas, Inc	2,070,496	3	1,747,863	4	2,113,048	4	5,931,407	4
Prosperity, Town of*	7,788	45	3790	46	0	-	11,129	46
Rock Hill, City of	338,012	17	386,136	6	55,981	21	780,129	15
Santee Electric Coop, Inc	572,150	13	91,402	18	602,857	6	1,266,409	7
Seneca, City of	57,220	34	75,090	19	1,124	34	133,434	35
South Carolina Electric and Gas Co.	7,571,107	1	7,897,185	1	5,836,115	3	21,304,407	1
South Carolina Public Service Authority (Santee Cooper)	1,622,520	4	2,020,264	3	7,508,844	2	11,151,628	3
Tri-County Electric Coop, Inc	226,486	21	51,953	28	4,298	32	282,737	26
Union, City of	69,375	31	57,765	25	9,478	30	136,618	34
Westminster, City of*	13,756	43	13414	43	0	-	27,306	43
Winnsboro, Town of*	32,778	41	15856	42	10891	29	56,855	41
York Electric Coop, Inc	573,547	12	159,991	13	60,504	20	794,042	14

*Due to changes in EIA data collection, sector data for these utilities will only be collected every 5 years. Total sales are current.

South Carolina Electric Utility Market Share-Sales, in Watt-hours



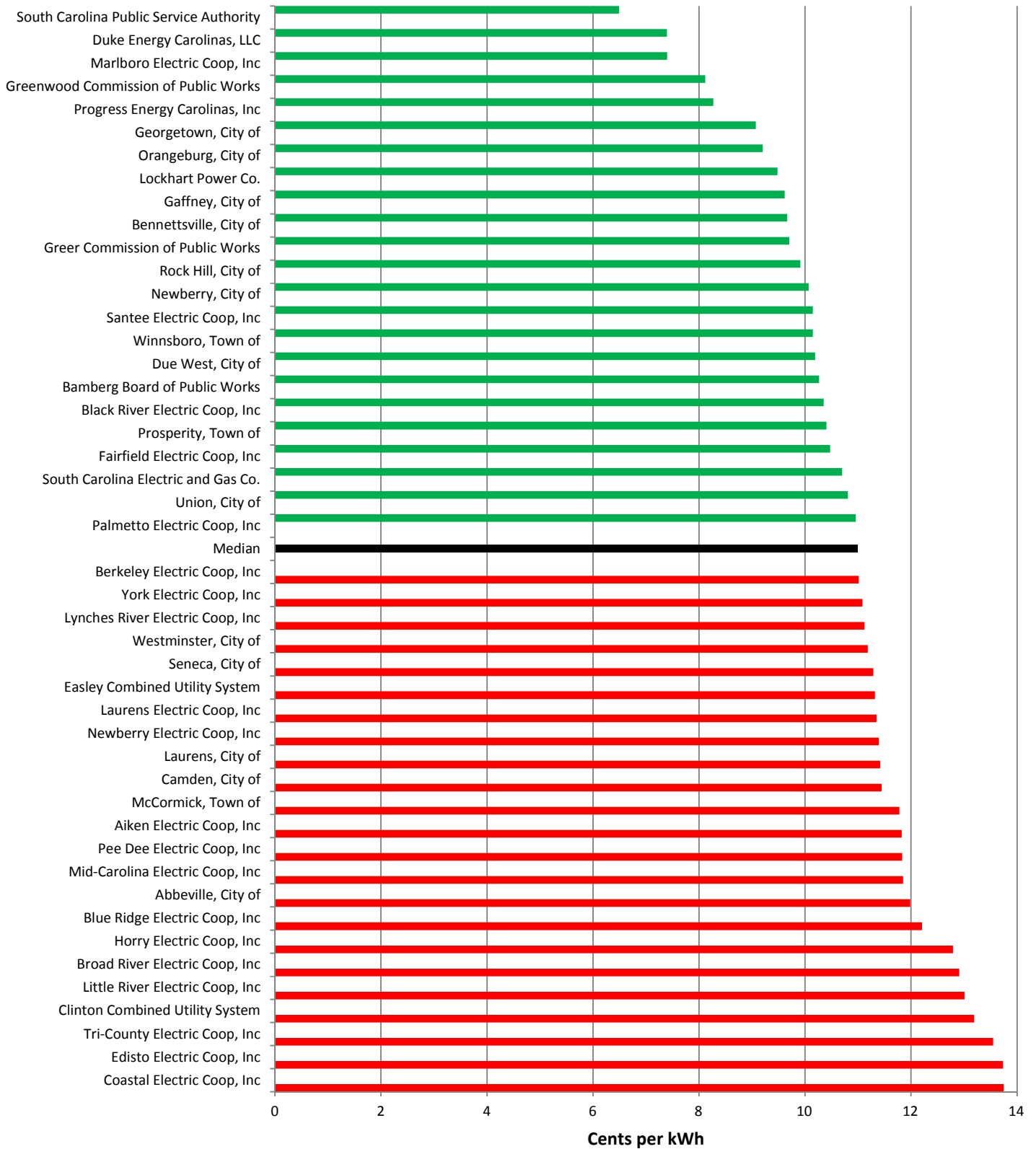
Data Source: U.S. Energy Information Administration, EIA-861

4. Average Revenue per Electric Customer

	Average Revenue, Residential Customers (cents per kWh)	RANK	Average Revenue, Commercial Customers (cents per kWh)	RANK	Average Revenue, Industrial Customers (cents per kWh)	RANK	Total Average Revenue per Customer (cents per kWh)	RANK
Abbeville, City of*	12.2405	19	11.0817	24	0	-	11.9870	9
Aiken Electric Coop, Inc	13.3279	8	11.0372	26	7.3620	25	11.8218	12
Bamberg Board of Public Works*	10.1394	38	9.6106	38	8.1765	18	10.2633	30
Bennettsville, City of	11.4011	30	7.6629	46	0	-	9.6634	37
Berkeley Electric Coop, Inc	12.0108	20	11.7762	16	7.9289	22	11.0122	23
Black River Electric Coop, Inc	10.8747	34	11.6506	17	7.5543	23	10.3519	29
Blue Ridge Electric Coop, Inc	13.2972	9	9.8943	36	8.8438	8	12.2083	8
Broad River Electric Coop, Inc	13.5527	6	12.4613	10	7.9354	21	12.9068	6
Camden, City of	11.0991	33	11.9482	14	0	-	11.4449	14
Clinton Combined Utility System	15.2381	1	13.9394	2	10.2178	5	13.1893	4
Coastal Electric Coop, Inc	14.2178	2	12.0636	12	0	-	13.7469	1
Due West, City of*	10.5405	35	9.3073	40	0	-	10.1925	31
Duke Energy Carolinas, LLC	9.8449	43	8.0149	45	5.2419	33	7.3948	45
Easley Combined Utility System	11.4235	29	11.2049	20	0	-	11.3198	18
Edisto Electric Coop, Inc	13.6385	4	14.8379	1	11.6086	2	13.7357	2
Fairfield Electric Coop, Inc	11.9077	22	12.6868	8	6.9966	28	10.4726	27
Gaffney, City of	9.9293	42	10.5199	33	7.3935	24	9.6166	38
Georgetown, City of	9.5548	44	8.7643	43	0	-	9.0714	41
Greenwood CPW	9.1270	46	10.1166	35	6.8142	30	8.1176	43
Greer Commission of Public Works	10.2208	36	9.1803	41	0	-	9.7039	36
Horry Electric Coop, Inc	12.9124	13	12.8598	6	9.8210	6	12.7922	7
Laurens Electric Coop, Inc	11.9631	21	11.3626	18	8.1428	19	11.3470	17
Laurens, City of	12.4430	16	10.6810	30	8.8002	10	11.4168	15
Little River Electric Coop, Inc	13.0070	12	13.0153	5	0	-	13.0087	5
Lockhart Power Co.	12.2531	18	12.2517	11	7.0907	26	9.4826	39
Lynches River Electric Coop, Inc	11.7461	24	11.2327	19	8.0349	20	11.1223	21
Marlboro Electric Coop, Inc	12.7272	14	13.5652	3	6.7142	31	7.4007	44
McCormick, Town of*	11.8214	23	11.9459	15	0	-	11.7800	13
Mid-Carolina Electric Coop, Inc	12.2749	17	11.1980	21	8.5238	15	11.8479	10
Newberry Electric Coop, Inc	12.7105	15	12.4976	9	8.7261	11	11.3943	16
Newberry, City of	11.7068	25	10.9763	27	8.5462	14	10.0682	34
Orangeburg, City of	10.1113	39	10.3988	34	8.4291	16	9.2025	40
Palmetto Electric Coop, Inc	11.1320	31	10.7333	29	10.3330	3	10.9591	24
Pee Dee Electric Coop, Inc	13.2128	10	13.0871	4	8.2828	17	11.8345	11
Progress Energy Carolinas, Inc	9.9626	41	8.7983	42	6.1741	32	8.2699	42
Prosperity, Town of*	9.3477	45	9.3140	39	0	-	10.4052	28
Rock Hill, City of	10.2127	37	9.8284	37	8.6940	12	9.9135	35
Santee Electric Coop, Inc	13.1164	11	12.8378	7	6.9163	29	10.1448	33
Seneca, City of	11.5238	27	11.1224	23	10.2936	4	11.2875	19
South Carolina Electric and Gas Co.	13.6357	5	10.5645	32	7.0682	27	10.6982	26
South Carolina Public Service Authority (Santee Cooper)	10.0551	40	8.4768	44	5.1904	34	6.4936	46
Tri-County Electric Coop, Inc	14.1130	3	11.0581	25	13.7738	1	13.5465	3
Union, City of	11.1164	32	10.6570	31	9.4640	7	10.8075	25
Westminster, City of*	13.4996	7	12.0173	13	0	-	11.1844	20
Winnsboro, Town of*	11.6877	26	11.1377	22	8.8330	9	10.1469	32
York Electric Coop, Inc	11.4247	28	10.7762	28	8.6308	13	11.0812	22

*Due to changes in EIA data collection, sector data for these utilities will only be collected every 5 years. Total average revenues are current.

**South Carolina Electric Utilities
Average Revenue per Customer per Kilowatt-hour (2012)**



Data source: U.S. Energy Information Administration, EIA-861

5. Green Power Customers (2012)[†]

	Residential Green Customers (#)	Total Residential Customers (#)	Green % of Total	RANK	Commercial Green Customers (#)	Total Commercial Customers (#)	Green % of Total	RANK
Aiken Electric Coop, Inc	159	42,918	0.3705%	12	1	2,778	0.0360%	11
Berkeley Electric Coop, Inc	327	74,218	0.4406%	11	2	8,541	0.0234%	14
Black River Electric Coop, Inc	85	27,373	0.3105%	15	3	4,009	0.0748%	8
Blue Ridge Electric Coop, Inc	325	58,426	0.5563%	8	1	5,130	0.0195%	15
Broad River Electric Coop, Inc	65	19,089	0.3405%	13	2	961	0.2081%	6
Coastal Electric Coop, Inc	27	10,353	0.2608%	17	0	1,151	-	-
Duke Energy Carolinas, LLC	95	456,064	0.0208%	22	2	88,104	0.0023%	17
Edisto Electric Coop, Inc	40	14,941	0.2677%	16	3	4,950	0.0606%	10
Fairfield Electric Coop, Inc	122	24,557	0.4968%	10	1	1,348	0.0742%	9
Horry Electric Coop, Inc	42	58,683	0.0716%	19	0	9,296	-	-
Laurens Electric Coop, Inc	842	47,972	1.7552%	2	86	5,165	1.6651%	2
Little River Electric Coop, Inc	37	11,847	0.3123%	14	0	2,172	-	-
Marlboro Electric Coop, Inc	30	5,338	0.5620%	7	1	1,189	0.0841%	7
Mid-Carolina Electric Coop, Inc	106	45,255	0.2342%	18	2	6,580	0.0304%	13
Palmetto Electric Coop, Inc	477	58,558	0.8146%	4	31	9,675	0.3204%	4
Pee Dee Electric Coop, Inc	209	28,583	0.7312%	5	4	1,660	0.2410%	5
Progress Energy Carolinas, Inc	54	134,808	0.0401%	20	2	31,285	0.0064%	16
Santee Electric Coop, Inc	254	40,919	0.6207%	6	1	3,042	0.0329%	12
South Carolina Electric and Gas Co.	209	574,222	0.0364%	21	0	93,775	-	-
South Carolina Public Service Authority (Santee Cooper)	1,604	138,353	1.1594%	3	426	28,456	1.4970%	3
Tri-County Electric Coop, Inc	1,070	17,363	6.1625%	1	24	410	5.8537%	1
York Electric Coop, Inc	213	41,211	0.5169%	9	0	3,457	-	-

	Industrial Green Customers (#)	Total Industrial Customers (#)	Green % of Total	RANK	Total Green Customers (#)	Total Customers (#)	Green % of Total	RANK
Aiken Electric Coop, Inc	0	16	-	-	160	45,712	0.3500%	12
Berkeley Electric Coop, Inc	0	141	-	-	329	82,900	0.3969%	11
Black River Electric Coop, Inc	0	17	-	-	88	31,399	0.2803%	14
Blue Ridge Electric Coop, Inc	0	26	-	-	326	63,582	0.5127%	7
Broad River Electric Coop, Inc	0	4	-	-	67	20,054	0.3341%	13
Coastal Electric Coop, Inc	0	-	-	-	27	11,504	0.2347%	16
Duke Energy Carolinas, LLC	0	1,708	-	-	97	545,876	0.0178%	22
Edisto Electric Coop, Inc	0	16	-	-	43	19,907	0.2160%	17
Fairfield Electric Coop, Inc	0	16	-	-	123	25,921	0.4745%	9
Horry Electric Coop, Inc	0	14	-	-	42	67,993	0.0618%	19
Laurens Electric Coop, Inc	0	27	-	-	928	53,164	1.7455%	2
Little River Electric Coop, Inc	0	-	-	-	37	14,019	0.2639%	15
Marlboro Electric Coop, Inc	0	6	-	-	31	6,533	0.4745%	10
Mid-Carolina Electric Coop, Inc	0	7	-	-	108	51,842	0.2083%	18
Palmetto Electric Coop, Inc	3	25	12.0000%	1	511	68,258	0.7486%	4
Pee Dee Electric Coop, Inc	0	47	-	-	213	30,290	0.7032%	5
Progress Energy Carolinas, Inc	0	672	-	-	56	166,765	0.0336%	20
Santee Electric Coop, Inc	0	20	-	-	255	43,981	0.5798%	6
South Carolina Electric and Gas Co.	2	722	0.2770%	4	211	668,719	0.0316%	21
South Carolina Public Service Authority (Santee Cooper)	1	28	3.5714%	3	2,031	166,837	1.2174%	3
Tri-County Electric Coop, Inc	17	159	10.6918%	2	1,111	17,932	6.1956%	1
York Electric Coop, Inc	0	20	-	-	213	44,688	0.4766%	8

[†]Data taken directly from EIA. Reporting format may vary from year to year.

6. Green Power Revenue (2012)[†]

	Residential Green Revenue (\$000)	Total Residential Revenue (\$000)	Green % of Total	RANK	Commercial Green Revenue (\$000)	Total Commercial Revenue (\$000)	Green % of Total	RANK
Aiken Electric Coop, Inc	7.65	76,641	0.0100%	15	1.08	13,947	0.0077%	10
Berkeley Electric Coop, Inc	17.98	137,627	0.0131%	11	0.15	27,812	0.0005%	15
Black River Electric Coop, Inc	5.04	47,728	0.0106%	14	1.01	11,745	0.0086%	9
Blue Ridge Electric Coop, Inc	18.87	94,765	0.0199%	4	3.02	21,147	0.0143%	7
Broad River Electric Coop, Inc	5.37	33,496	0.0160%	9	0.14	4,251	0.0033%	13
Coastal Electric Coop, Inc	1.44	19,445	0.0074%	16	-	4,616	-	-
Duke Energy Carolinas, LLC	6.26	609,303	0.0010%	22	0.07	454,963	0.00002%	17
Edisto Electric Coop, Inc	2.02	30,441	0.0066%	18	0.43	7,564	0.0057%	11
Fairfield Electric Coop, Inc	6.74	41,582	0.0162%	7	1.08	9,438	0.0114%	8
Horry Electric Coop, Inc	2.32	103,286	0.0022%	19	-	22,188	-	-
Laurens Electric Coop, Inc	30.85	77,825	0.0396%	2	6.19	21,201	0.0292%	4
Little River Electric Coop, Inc	2.45	18,657	0.0131%	10	-	4,762	-	-
Marlboro Electric Coop, Inc	1.27	10,182	0.0125%	13	0.72	2,574	0.0280%	5
Mid-Carolina Electric Coop, Inc	5.64	80,737	0.0070%	17	0.29	27,886	0.0010%	14
Palmetto Electric Coop, Inc	25.51	93,526	0.0273%	3	30.16	48,394	0.0623%	2
Pee Dee Electric Coop, Inc	10.60	55,291	0.0192%	5	4.08	7,192	0.0567%	3
Progress Energy Carolinas, Inc	3.10	206,275	0.0015%	20	0.30	153,782	0.0002%	16
Santee Electric Coop, Inc	12.10	75,045	0.0161%	8	0.43	11,734	0.0037%	12
South Carolina Electric and Gas Co.	13.12	1,032,370	0.0013%	21	-	834,301	-	-
South Carolina Public Service Authority (Santee Cooper)	103.33	163,146	0.0633%	1	333.51	171,253	0.1947%	1
Tri-County Electric Coop, Inc	4.11	31,964	0.0129%	12	0.90	5,745	0.0157%	6
York Electric Coop, Inc	12.09	65,526	0.0185%	6	-	17,241	-	-

	Industrial Green Revenue (\$000)	Total Industrial Revenue (\$000)	Green % of Total	RANK	Total Green Revenue (\$000)	Total Revenue (\$000)	Green % of Total	RANK
Aiken Electric Coop, Inc	0	12,660	-	-	8.73	103,248	0.0085%	15
Berkeley Electric Coop, Inc	0	34,065	-	-	18.12	199,504	0.0091%	13
Black River Electric Coop, Inc	0	9,730	-	-	6.05	69,204	0.0087%	14
Blue Ridge Electric Coop, Inc	0	7,398	-	-	21.89	123,310	0.0178%	7
Broad River Electric Coop, Inc	0	2,306	-	-	5.51	40,053	0.0138%	8
Coastal Electric Coop, Inc	0	-	-	-	1.44	24,061	0.0060%	17
Duke Energy Carolinas, LLC	0	454,939	-	-	6.33	1,519,204	0.0004%	22
Edisto Electric Coop, Inc	0	1,883	-	-	2.45	39,887	0.0061%	16
Fairfield Electric Coop, Inc	0	13,403	-	-	7.82	64,423	0.0121%	10
Horry Electric Coop, Inc	0	3,566	-	-	2.32	129,040	0.0018%	20
Laurens Electric Coop, Inc	0	10,260	-	-	37.04	109,286	0.0339%	5
Little River Electric Coop, Inc	0	-	-	-	2.45	23,419	0.0105%	11
Marlboro Electric Coop, Inc	0	53,120	-	-	1.99	65,876	0.0030%	19
Mid-Carolina Electric Coop, Inc	0	3,053	-	-	5.93	111,675	0.0053%	18
Palmetto Electric Coop, Inc	28.73	7,178	0.4003%	3	84.40	149,098	0.0566%	4
Pee Dee Electric Coop, Inc	0	15,056	-	-	14.68	77,539	0.0189%	6
Progress Energy Carolinas, Inc	0	130,462	-	-	3.40	490,519	0.0007%	21
Santee Electric Coop, Inc	0	41,695	-	-	12.53	128,475	0.0098%	12
South Carolina Electric and Gas Co.	2,615	412,510	0.6339%	2	2,628.11	2,279,181	0.1153%	1
South Carolina Public Service Authority (Santee Cooper)	3.45	389,742	0.0009%	4	440.29	724,141	0.0608%	3
Tri-County Electric Coop, Inc	18.39	592	3.1064%	1	23.40	38,301	0.0611%	2
York Electric Coop, Inc	0	5,222	-	-	12.09	87,989	0.0137%	9

[†]Data taken directly from EIA. Reporting format may vary from year to year

7. Green Power Sales (2012)[†]

	Residential Green Sales (MWH)	Total Residential Sales (MWH)	Green % of Total	RANK	Commercial Green Sales (MWH)	Total Commercial Sales (MWH)	Green % of Total	Rank
Aiken Electric Coop, Inc	255.1	575,042	0.0444%	15	36.0	126,363	0.0285%	10
Berkeley Electric Coop, Inc	599.2	1,145,858	0.0523%	14	4.9	236,171	0.0021%	15
Black River Electric Coop, Inc	1,371.4	438,892	0.3125%	1	270.9	100,811	0.2687%	4
Blue Ridge Electric Coop, Inc	629.0	712,669	0.0883%	5	100.8	213,729	0.0472%	9
Broad River Electric Coop, Inc	179.0	247,151	0.0724%	7	4.8	34,116	0.0141%	13
Coastal Electric Coop, Inc	48.0	136,765	0.0351%	16	0	38,264	-	-
Duke Energy Carolinas, LLC	156.5	6,189,040	0.0025%	22	1.8	5,676,494	0.00003%	17
Edisto Electric Coop, Inc	67.2	223,196	0.0301%	17	14.4	50,975	0.0282%	11
Fairfield Electric Coop, Inc	224.5	349,202	0.0643%	10	36.0	74,392	0.0484%	8
Horry Electric Coop, Inc	77.3	799,895	0.0097%	19	0.0	172,538	0.0000%	18
Laurens Electric Coop, Inc	1,028.3	650,544	0.1581%	3	206.4	186,586	0.1106%	7
Little River Electric Coop, Inc	81.8	143,439	0.0570%	12	0	36,587	-	-
Marlboro Electric Coop, Inc	42.4	80,002	0.0530%	13	24.0	18,975	0.1265%	5
Mid-Carolina Electric Coop, Inc	187.9	657,737	0.0286%	18	9.6	249,023	0.0039%	14
Palmetto Electric Coop, Inc	850.2	840,156	0.1012%	4	1,304.8	450,877	0.2894%	3
Pee Dee Electric Coop, Inc	353.4	418,466	0.0845%	6	68.0	54,955	0.1237%	6
Progress Energy Carolinas, Inc	78.0	2,070,496	0.0038%	21	13.4	1,747,863	0.0008%	16
Santee Electric Coop, Inc	403.4	572,150	0.0705%	8	14.4	91,402	0.0158%	12
South Carolina Electric and Gas Co.	327.9	7,571,107	0.0043%	20	0	7,897,185	-	-
South Carolina Public Service Authority (Santee Cooper)	3,254.6	1,622,520	0.2006%	2	11,116.9	2,020,264	0.5503%	1
Tri-County Electric Coop, Inc	137.0	226,486	0.0605%	11	152.6	51,953	0.2937%	2
York Electric Coop, Inc	402.9	573,547	0.0702%	9	0	159,991	-	-

	Industrial Green Sales (MWH)	Total Industrial Sales (MWH)	Green % of Total	RANK	Total Green Sales (MWH)	Total Sales (MWH)	Green % of Total	RANK
Aiken Electric Coop, Inc	0	171,965	-	-	291.10	873,370	0.0333%	14
Berkeley Electric Coop, Inc	0	429,630	-	-	604.10	1,811,659	0.0333%	13
Black River Electric Coop, Inc	0	128,804	-	-	1,642.24	668,507	0.2457%	3
Blue Ridge Electric Coop, Inc	0	83,652	-	-	729.80	1,010,050	0.0723%	7
Broad River Electric Coop, Inc	0	29,057	-	-	183.80	310,324	0.0592%	9
Coastal Electric Coop, Inc	0	0	-	-	48.00	175,029	0.0274%	17
Duke Energy Carolinas, LLC	0	8,678,807	-	-	158.30	20,544,341	0.0008%	22
Edisto Electric Coop, Inc	0	16,219	-	-	81.60	290,390	0.0281%	16
Fairfield Electric Coop, Inc	0	191,564	-	-	260.50	615,158	0.0423%	12
Horry Electric Coop, Inc	0	36,310	-	-	77.30	1,008,743	0.0077%	19
Laurens Electric Coop, Inc	0	126,001	-	-	1,234.70	963,131	0.1282%	6
Little River Electric Coop, Inc	0	0	-	-	81.80	180,026	0.0454%	11
Marlboro Electric Coop, Inc	0	791,155	-	-	66.40	890,132	0.0075%	20
Mid-Carolina Electric Coop, Inc	0	35,816	-	-	197.53	942,576	0.0210%	18
Palmetto Electric Coop, Inc	957.6	69,467	1.3785%	3	3,112.60	1,360,500	0.2288%	4
Pee Dee Electric Coop, Inc	0	181,774	-	-	421.40	655,195	0.0643%	8
Progress Energy Carolinas, Inc	0	2,113,048	-	-	91.42	5,931,407	0.0015%	21
Santee Electric Coop, Inc	0	602,857	-	-	417.80	1,266,409	0.0330%	15
South Carolina Electric and Gas Co.	96,118.4	5,836,115	1.6470%	2	96,446.26	21,304,407	0.4527%	1
South Carolina Public Service Authority (Santee Cooper)	115	7,508,844	0.0015%	4	14,486.53	11,151,628	0.1299%	5
Tri-County Electric Coop, Inc	613	4,298	14.2624%	1	902.60	282,737	0.3192%	2
York Electric Coop, Inc	0	60,504	-	-	402.90	794,042	0.0507%	10

[†]Data taken directly from EIA. Reporting format may vary from year to year.

8. Net Metering Customers (2012)

	Residential Net Metering Customers (#)	Total Residential Customers (#)	Net Meter % of Total	RANK	Commercial Net Metering Customers (#)	Total Commercial Customers (#)	Net Meter % of Total	RANK	Total Net Metering Customers (#)	Total Customers (#)	Net Meter % of Total	RANK
Aiken Electric Coop, Inc	17	42,918	0.0396%	1	2	2,778	0.0720%	1	19	45,712	0.0416%	1
Berkeley Electric Coop, Inc	1	74,218	0.0013%	18	0	8,541	-	-	1	82,900	0.0012%	19
Black River Electric Coop, Inc	1	27,373	0.0037%	15	0	4,009	-	-	1	31,399	0.0032%	17
Blue Ridge Electric Coop, Inc	10	58,426	0.0171%	7	0	5,130	-	-	10	63,582	0.0157%	7
Broad River Electric Coop, Inc	1	19,089	0.0052%	14	0	961	-	-	1	20,054	0.0050%	15
Coastal Electric Coop, Inc	1	10,353	0.0097%	11	0	1,151	-	-	1	11,504	0.0087%	11
Duke Energy Carolinas, LLC	53	456,064	0.0116%	9	10	88,104	0.0114%	4	63	545,876	0.0115%	9
Easley Combined Utility System	1	11,713	0.0085%	13	0	1,892	-	-	1	13,605	0.0074%	12
Horry Electric Coop, Inc	11	58,683	0.0187%	5	0	9,296	-	-	11	67,993	0.0162%	6
Laurens Electric Coop, Inc	10	47,972	0.0208%	3	3	5,165	0.0581%	2	13	53,164	0.0245%	2
Little River Electric Coop, Inc	0	11,847	-	-	1	2,172	0.0460%	3	1	14,019	0.0071%	14
Lynches River Electric Coop, Inc	2	19,574	0.0102%	10	0	895	-	-	2	20,479	0.0098%	10
Mid-Carolina Electric Coop, Inc	1	45,255	0.0022%	17	0	6,580	-	-	1	51,842	0.0019%	18
Palmetto Electric Coop, Inc	9	58,558	0.0154%	8	1	9,675	0.0103%	5	10	68,258	0.0147%	8
Pee Dee Electric Coop, Inc	1	28,583	0.0035%	16	0	1,660	-	-	1	30,290	0.0033%	16
Progress Energy Carolinas, Inc	1	134,808	0.0007%	19	1	31,285	0.0032%	6	2	166,765	0.0012%	20
South Carolina Electric and Gas Co.	123	574,222	0.0214%	2	0	93,775	-	-	123	668,719	0.0184%	3

8. Net Metering Customers (2012)

South Carolina Public Service Authority (Santee Cooper)	12	138,353	0.0087%	12	0	28,456	-	-	12	166,837	0.0072%	13
Tri-County Electric Coop, Inc	3	17,363	0.0173%	6	0	410	-	-	3	17,932	0.0167%	5
York Electric Coop, Inc	8	41,211	0.0194%	4	0	3,457	-	-	8	44,688	0.0179%	4

9. Net Metering Customer Power Sold to Grid (2012)

	Residential Net Meter Sales to Grid (MWH)	Total Residential Sales (MWH)	% of Residential Sales	RANK	Commercial Net Meter Sales to Grid (MWH)	Total Commercial Sales (MWH)	% of Commercial Sales	RANK	Total Net Meter Sales to Grid (MWH)	Total Sales (MWH)	% of Total Sales	RANK
Aiken Electric Coop, Inc	24	575,042	0.0042%	4	5	126,363	0.0040%	3	29	873,370	0.0033%	4
Berkeley Electric Coop, Inc	0	1,145,858	-	-	0	236,171	-	-	0	1,811,659	-	-
Black River Electric Coop, Inc	0	438,892	-	-	0	100,811	-	-	0	668,507	-	-
Blue Ridge Electric Coop, Inc	13	712,669	0.0018%	8	0	213,729	-	-	13	1,010,050	0.0013%	9
Broad River Electric Coop, Inc	16	247,151	0.0065%	2	0	34,116	-	-	16	310,324	0.0052%	1
Coastal Electric Coop, Inc	0	136,765	-	-	0	38,264	-	-	0	175,029	-	-
Duke Energy Carolinas, LLC	91	6,189,040	0.0015%	9	27	5,676,494	0.0005%	4	118	20,544,341	0.0006%	11
Easley Combined Utility System	1	151,687	0.0007%	11	0	136,887	-	-	1	288,574	0.0002%	12
Horry Electric Coop, Inc	0	799,895	-	-	0	172,538	-	-	0	1,008,743	-	-
Laurens Electric Coop, Inc	0	650,544	-	-	31	186,586	0.0164%	1	31	963,131	0.0032%	5
Little River Electric Coop, Inc	0	143,439	-	-	3	36,587	0.0086%	2	3	180,026	0.0017%	8
Lynches River Electric Coop, Inc	17	243,595	0.0070%	1	0	49,356	-	-	17	343,941	0.0048%	3
Mid-Carolina Electric Coop, Inc	23	657,737	0.0035%	5	0	249,023	-	-	23	942,576	0.0025%	6
Palmetto Electric Coop, Inc	0	840,156	-	-	0	450,877	-	-	0	1,360,500	-	-
Pee Dee Electric Coop, Inc	0	418,466	-	-	0	54,955	-	-	0	655,195	-	-
Progress Energy Carolinas, Inc	0	2,070,496	-	-	0	1,747,863	-	-	0	5,931,407	-	-
South Carolina Electric and Gas Co.	156	7,571,107	0.0021%	7	0	7,897,185	-	-	156	21,304,407	0.0007%	10

9. Net Metering Customer Power Sold to Grid (2012)

South Carolina Public Service Authority (Santee Cooper)	22	1,622,520	0.0014%	10	0	2,020,264	-	-	22	11,151,628	0.0002%	13
Tri-County Electric Coop, Inc	14	226,486	0.0062%	3	0	51,953	-	-	14	282,737	0.0051%	2
York Electric Coop, Inc	15	573,547	0.0026%	6	0	159,991	-	-	15	794,042	0.0019%	7

10. Automatic Meter Reading (AMR) Customers, Residential and Commercial (2012)

	Residential AMR Meters (#)	Total Residential Customers (#)	AMR Meters per Customer	RANK	Commercial AMR Meters (#)	Total Commercial Customers (#)	AMR Meters per Customer	RANK
Abbeville, City of	2,830	2,973	0.9519	23	451	503	0.8966	18
Aiken Electric Coop, Inc	0	42,918	-	-	0	2,778	-	-
Bamberg Board of Public Works	1,437	1,439	0.9986	17	480	359	1.3370	1
Berkeley Electric Coop, Inc	12,342	74,218	0.1663	27	842	8,541	0.0986	24
Black River Electric Coop, Inc	0	27,373	-	-	0	4,009	-	-
Broad River Electric Coop, Inc	19,089	19,089	1.0000	5	961	961	1.0000	3
Camden, City of	9,316	9,316	1.0000	5	1,403	1,403	1.0000	3
Clinton Combined Utility System	1,900	3,476	0.5466	24	0	595	-	-
Coastal Electric Coop, Inc	0	10,353	-	-	0	1,151	-	-
Duke Energy Carolinas, LLC	443,086	456,064	0.9715	22	50,417	88,104	0.5722	21
Easley Combined Utility System	11,713	11,713	1.0000	5	1,892	1,892	1.0000	3
Edisto Electric Coop, Inc	14,941	14,941	1.0000	5	4,950	4,950	1.0000	3
Fairfield Electric Coop, Inc	24,557	24,557	1.0000	5	1,348	1,348	1.0000	3
Gaffney, City of	5,575	5,575	1.0000	5	1,592	1,592	1.0000	3
Georgetown, City of	4,443	3,821	1.1628	1	114	1,167	0.0977	25
Greenwood CPW	3,855	10,961	0.3517	26	416	2,590	0.1606	23
Greer Commission of Public Works	14,003	14,003	1.0000	5	4,017	4,017	1.0000	3
Horry Electric Coop, Inc	58,677	58,683	0.9999	16	9,295	9,296	0.9999	13
Laurens Electric Coop, Inc	48,008	47,972	1.0008	4	4,743	5,165	0.9183	16
Laurens, City of	4,657	4,657	1.0000	5	0	857	-	-
Little River Electric Coop, Inc	11,847	11,847	1.0000	5	2,172	2,172	1.0000	3
Lynches River Electric Coop, Inc	19,424	19,574	0.9923	18	869	895	0.9709	15
Marlboro Electric Coop, Inc	0	5,338	-	-	0	1,189	-	-
Mid-Carolina Electric Coop, Inc	0	45,255	-	-	0	6,580	-	-
Newberry Electric Coop, Inc	12,666	11,915	1.0630	2	718	719	0.9986	14
Palmetto Electric Coop, Inc	0	58,558	-	-	0	9,675	-	-
Pee Dee Electric Coop, Inc	0	28,583	-	-	0	1,660	-	-
Progress Energy Carolinas, Inc	132,388	134,808	0.9820	20	24,639	31,285	0.7876	20
Rock Hill, City of	0	30,012	-	-	0	3,497	-	-
Santee Electric Coop, Inc	40,571	40,919	0.9915	19	2,556	3,042	0.8402	19
South Carolina Electric and Gas Co.	563,873	574,222	0.9820	21	85,292	93,775	0.9095	17
South Carolina Public Service Authority (Santee Cooper)	74,700	138,353	0.5399	25	9,761	28,456	0.3430	22
Tri-County Electric Coop, Inc	17,363	17,363	1.0000	5	410	410	1.0000	3
Union, City of	6,154	5,887	1.0454	3	1,143	1,086	1.0525	2
York Electric Coop, Inc	41,211	41,211	1.0000	5	3,457	3,457	1.0000	3

11. Automatic Meter Reading (AMR) Customers, Industrial and Totals (2012)

	Industrial AMR Meters (#)	Total Industrial Customers (#)	AMR Meters per Customer	RANK	Total AMR Meters (#)	Total Customers (#)	AMR Meters per Customer	RANK
Abbeville, City of	0	-	-	-	3,281	3,506	0.9358	20
Aiken Electric Coop, Inc	0	16	-	-	0	45,712	-	-
Bamberg Board of Public Works	8	6	1.3333	1	1,925	1,925	1.0000	3
Berkeley Electric Coop, Inc	0	141	-	-	13,184	82,900	0.1590	27
Black River Electric Coop, Inc	0	17	-	-	0	31,399	-	-
Broad River Electric Coop, Inc	4	4	1	4	20,054	20,054	1.0000	3
Camden, City of	0	-	-	-	10,719	10,719	1.0000	3
Clinton Combined Utility System	0	9	-	-	1,900	4,080	0.4657	25
Coastal Electric Coop, Inc	0	-	-	-	0	11,504	-	-
Duke Energy Carolinas, LLC	455	1,708	0.2664	13	493,958	545,876	0.9049	22
Easley Combined Utility System	0	-	-	-	13,605	13,605	1.0000	3
Edisto Electric Coop, Inc	16	16	1	4	19,907	19,907	1.0000	3
Fairfield Electric Coop, Inc	16	16	1	4	25,921	25,921	1.0000	3
Gaffney, City of	31	31	1	4	7,198	7,198	1.0000	3
Georgetown, City of	0	-	-	-	4,557	4,988	0.9136	21
Greenwood CPW	0	243	-	-	4,271	13,794	0.3096	26
Greer Commission of Public Works	0	-	-	-	18,020	18,020	1.0000	3
Horry Electric Coop, Inc	13	14	0.9286	10	67,985	67,993	0.9999	13
Laurens Electric Coop, Inc	27	27	1	4	52,778	53,164	0.9927	15
Laurens, City of	0	8	-	-	4,657	5,522	0.8434	23
Little River Electric Coop, Inc	0	-	-	-	14,019	14,019	1.0000	3
Lynches River Electric Coop, Inc	0	10	-	-	20,293	20,479	0.9909	16
Marlboro Electric Coop, Inc	0	6	-	-	0	6,533	-	-
Mid-Carolina Electric Coop, Inc	0	7	-	-	0	51,842	-	-
Newberry Electric Coop, Inc	19	18	1.0556	3	13,403	12,652	1.0594	1
Palmetto Electric Coop, Inc	0	25	-	-	0	68,258	-	-
Pee Dee Electric Coop, Inc	0	47	-	-	0	30,290	-	-
Progress Energy Carolinas, Inc	223	672	0.3318	12	157,250	166,765	0.9429	19
Rock Hill, City of	0	11	-	-	0	33,520	-	-
Santee Electric Coop, Inc	0	20	-	-	43,127	43,981	0.9806	17
South Carolina Electric and Gas Co.	640	722	0.8864	11	649,805	668,719	0.9717	18
South Carolina Public Service Authority (Santee Cooper)	0	28	-	-	84,461	166,837	0.5062	24
Tri-County Electric Coop, Inc	159	159	1	4	17,932	17,932	1.0000	3
Union, City of	15	12	1.25	2	7,312	6,985	1.0468	2
York Electric Coop, Inc	0	20	-	-	44,668	44,688	0.9996	14

12. Smart Meter (AMI) Customers (2012)

	Residential AMI Meters (#)	Total Residential Customers (#)	AMI Meters per Customer	RANK	Commercial AMI Meters (#)	Total Commercial Customers (#)	AMI Meters per Customer	RANK
Aiken Electric Coop, Inc	42,918	42,918	1.0000	3	2,778	2,778	1.0000	1
Black River Electric Coop, Inc	27,373	27,373	1.0000	3	4,009	4,009	1.0000	1
Coastal Electric Coop, Inc	10,353	10,353	1.0000	3	1,151	1,151	1.0000	1
Duke Energy Carolinas, LLC	1,777	456,064	0.0039	10	480	88,104	0.0054	10
Marlboro Electric Coop, Inc	5,339	5,338	1.0002	2	1,189	1,189	1.0000	1
Mid-Carolina Electric Coop, Inc	45,255	45,255	1.0000	3	6,580	6,580	1.0000	1
Palmetto Electric Coop, Inc	58,575	58,558	1.0003	1	9,675	9,675	1.0000	1
Pee Dee Electric Coop, Inc	28,583	28,583	1.0000	3	1,660	1,660	1.0000	1
Rock Hill, City of	6,312	30,012	0.2103	8	801	3,497	0.2291	8
South Carolina Electric and Gas Co.	583	574,222	0.0010	11	8,171	93,775	0.0871	9
South Carolina Public Service Authority (Santee Cooper)	0	138,353	0	12	0	28,456	0	11
York Electric Coop, Inc	6,760	41,211	0.1640	9	0	3,457	0	11

	Industrial AMI Meters (#)	Total Industrial Customers (#)	AMI Meters per Customer	RANK	Total AMI Meters (#)	Total Customers (#)	AMI Meters per Customer	RANK
Aiken Electric Coop, Inc	16	16	1.0000	2	45,712	45,712	1.0000	2
Black River Electric Coop, Inc	17	17	1.0000	2	31,399	31,399	1.0000	2
Coastal Electric Coop, Inc	0	0	0	9	11,504	11,504	1.0000	2
Duke Energy Carolinas, LLC	303	1,708	0.1774	8	2,560	545,876	0.0047	11
Marlboro Electric Coop, Inc	0	6	0	9	6,528	6,533	0.9992	7
Mid-Carolina Electric Coop, Inc	7	7	1.0000	2	51,842	51,842	1.0000	2
Palmetto Electric Coop, Inc	25	25	1.0000	2	68,275	68,258	1.0002	1
Pee Dee Electric Coop, Inc	47	47	1.0000	2	30,290	30,290	1.0000	2
Rock Hill, City of	0	11	0	9	7,113	33,520	0.2122	8
South Carolina Electric and Gas Co.	644	722	0.8920	7	9,398	668,719	0.0141	10
South Carolina Public Service Authority (Santee Cooper)	33	28	1.1786	1	33	166,837	0.0002	12
York Electric Coop, Inc	0	20	0	9	6,760	44,688	0.1513	9

13. Electric Demand Side Management Programs (2012)

South Carolina Electric Utilities: Summary of Demand-Side Management (2012)																
Electric Utility Name	Ownership	Energy Efficiency					Load Management					Public Information				
		New Building Efficiency Incentives	Existing Building Retrofit Incentives	On-Site Energy Assessments	Low-Income Efficiency and Weatherization Assistance	Equipment and Lighting Incentives	Load Control Incentives	Interruptible Service Incentives	Time-of-Use or Seasonal Rates	Standby Generation Incentives	Thermal Storage Incentives	Voltage Reduction	Web-Based Customer Tips and Tools	In-Home Real-Time Energy Monitoring	Direct-to-Customer Communication	Public Campaigns
City of Abbeville	Municipal			✓				✓					✓		✓	
Bamberg Board of Public Works	Municipal															
City of Bennettsville	Municipal															
City of Camden	Municipal										✓					
City of Clinton	Municipal															
Town of Due West	Municipal															
Duke Energy Carolinas	Investor-Owned			✓	✓	✓	✓	✓	✓							✓
Easley Combined Utility System	Municipal										✓					
Electric Cooperatives (20 Co-ops)	Cooperative		✓*				✓									
Gaffney Board of Public Works	Municipal															
City of Georgetown	Municipal															
Greenwood CPW	Municipal															
Greer CPW	Municipal			✓					✓	✓			✓			
Laurens CPW	Municipal															
Lockhart Power Company	Investor-Owned							✓								
McCormick CPW	Municipal															
City of Newberry	Municipal															
Orangeburg DPU	Municipal			✓		✓			✓							
Progress Energy Carolinas	Investor-Owned	✓	✓		✓	✓	✓	✓	✓		✓	✓	✓		✓	✓
Town of Prosperity	Municipal															
City of Rock Hill	Municipal					✓	✓	✓		✓		✓			✓	
Santee Cooper	State-Owned	✓	✓	✓		✓			✓				✓		✓	✓
Seneca Light & Water Plant	Municipal															
South Carolina Electric & Gas Co.	Investor-Owned	✓	✓	✓	✓	✓		✓	✓	✓		✓	✓	✓	✓	
City of Union	Municipal										✓					
Westminster CPW	Municipal							✓								
Town of Winnsboro	Municipal															

Source: South Carolina Energy Office, annual survey of utilities

*Program available from some electric cooperatives

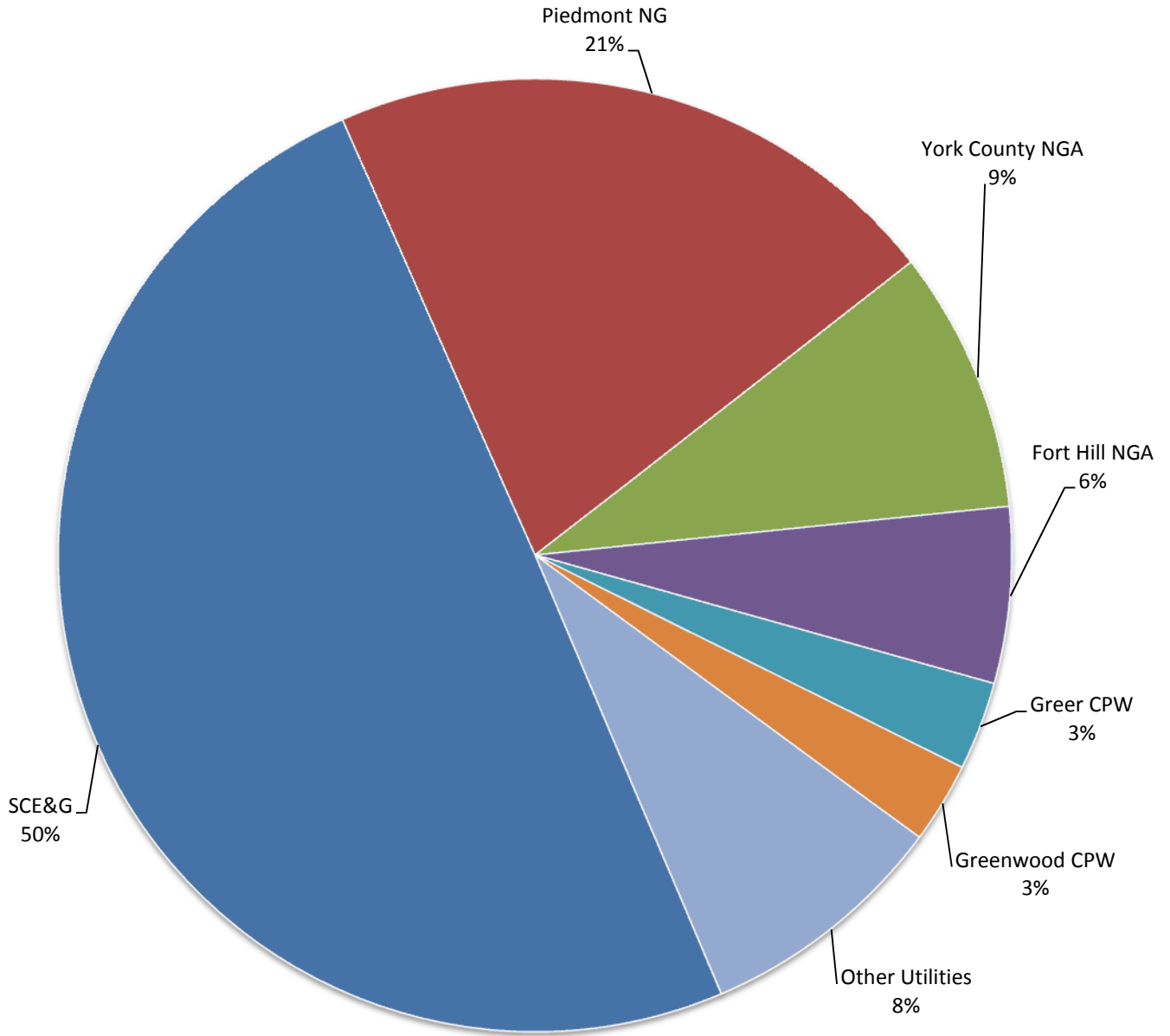
14. Natural Gas Customers (2012)

	Residential Customers (#)	RANK	Commercial Customers (#)	RANK	Industrial Customers (#)	RANK
Bamberg Board of Public Works	917	15	154	15	20	9
Bennettsville, City of	2,592	13	260	14	5	15
Chester County Natural Gas Authority	6,584	9	844	9	21	8
Clinton-Newberry Natural Gas Authority	11,162	7	1,473	7	44	6
Fort Hill Natural Gas Authority	34,549	4	3,689	4	99	3
Fountain Inn Natural Gas	6,152	11	314	12	49	4
Greenwood Commission of Public Works	15,902	6	1,618	5	18	10
Greer Commission of Public Works	17,649	5	1,518	6	10	13
Laurens Commission of Public Works	6,463	10	745	10	17	11
Orangeburg Department of Public Utilities	7,174	8	1,065	8	25	7
Piedmont Natural Gas	121,097	2	13,604	2	374	2
South Carolina Electric and Gas Co.	292,826	1	25,561	1	462	1
Union, City of	5,479	12	631	11	16	12
Winnsboro, Town of	2,201	14	301	13	7	14
York County Natural Gas Authority	52,886	3	4,038	3	48	5

	Power Plant Customers (#)	RANK	Vehicle Customers (#)	RANK	Total Customers (#)	RANK
Bamberg Board of Public Works	0	-	0	-	1,091	15
Bennettsville, City of	0	-	0	-	2,857	13
Chester County Natural Gas Authority	0	-	1	3	7,450	9
Clinton-Newberry Natural Gas Authority	0	-	0	-	12,679	7
Fort Hill Natural Gas Authority	0	-	1	3	38,338	4
Fountain Inn Natural Gas	0	-	0	-	6,515	11
Greenwood Commission of Public Works	0	-	0	-	17,538	6
Greer Commission of Public Works	0	-	0	-	19,177	5
Laurens Commission of Public Works	0	-	0	-	7,225	10
Orangeburg Department of Public Utilities	2	2	0	-	8,266	8
Piedmont Natural Gas ¹	1	3	2	1	135,078	2
South Carolina Electric and Gas Co.	3	1	0	-	318,852	1
Union, City of	0	-	0	-	6,126	12
Winnsboro, Town of	0	-	0	-	2,509	14
York County Natural Gas Authority	0	-	2	1	56,974	3

¹ Total power plant customers for Piedmont Natural Gas were changed from 0 to 1 after verifying the information with a company representative.

South Carolina Natural Gas Utility Market Share - Number of Customers (2012)



Data Source: U.S. Energy Information Administration, EIA-176

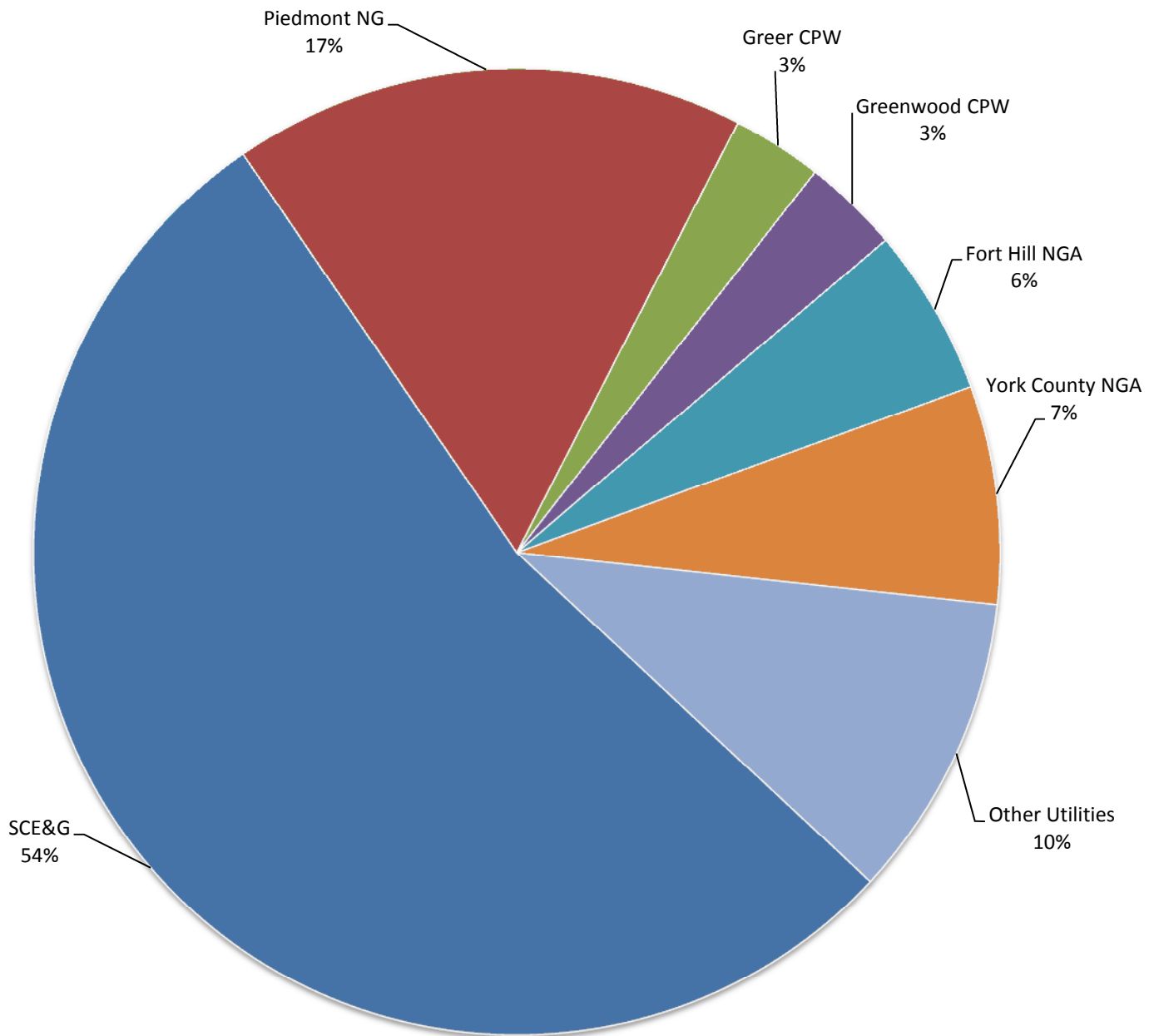
15. Natural Gas Revenue (2012)

	Residential Revenue (\$)	RANK	Commercial Revenue (\$)	RANK	Industrial Revenue (\$)	RANK
Bamberg Board of Public Works	372,195	15	315,102	14	608,297	15
Bennettsville, City of	1,167,852	14	459,200	12	684,806	14
Chester County Natural Gas Authority	3,518,517	8	1,239,677	10	10,706,070	3
Clinton-Newberry Natural Gas Authority	5,847,840	7	2,923,266	7	6,085,550	7
Fort Hill Natural Gas Authority	15,635,878	4	9,509,041	3	10,219,458	5
Fountain Inn Natural Gas	2,543,304	12	342,958	13	1,983,234	11
Greenwood Commission of Public Works	7,156,676	6	3,737,408	6	9,484,023	6
Greer Commission of Public Works	8,704,645	5	4,769,117	5	5,591,097	8
Laurens Commission of Public Works	2,918,656	10	1,012,446	11	1,421,087	13
Orangeburg Department of Public Utilities	2,786,319	11	1,847,733	9	3,061,791	10
Piedmont Natural Gas	64,083,586	2	33,664,617	2	10,423,259	4
South Carolina Electric and Gas Co.	157,650,060	1	98,005,588	1	79,459,792	1
Union, City of	3,232,510	9	1,883,124	8	4,225,363	9
Winnsboro, Town of	1,266,889	13	170,666	15	1,770,084	12
York County Natural Gas Authority	25,634,094	3	8,315,943	4	11,988,694	2

	Power Plant Revenue (\$)	RANK	Vehicle Revenue (\$)	RANK	Total Revenue (\$)	RANK
Bamberg Board of Public Works	-	-	0	-	1,295,594	15
Bennettsville, City of	-	-	0	-	2,311,858	14
Chester County Natural Gas Authority	-	-	249	4	15,464,513	7
Clinton-Newberry Natural Gas Authority	-	-	0	-	14,856,656	8
Fort Hill Natural Gas Authority	-	-	7768	2	35,372,145	4
Fountain Inn Natural Gas	-	-	0	-	4,869,496	12
Greenwood Commission of Public Works	-	-	0	-	20,378,107	5
Greer Commission of Public Works	-	-	0	-	19,064,859	6
Laurens Commission of Public Works	-	-	0	-	5,352,189	11
Orangeburg Department of Public Utilities	20,976	3	0	-	7,716,819	10
Piedmont Natural Gas ²	1,285,845	2	2170	3	109,459,477	2
South Carolina Electric and Gas Co.	2,001,849	1	0	-	337,117,289	1
Union, City of	-	-	0	-	9,340,997	9
Winnsboro, Town of	-	-	0	-	3,207,639	13
York County Natural Gas Authority	-	-	60344	1	45,999,075	3

² Total power plant revenues for Piedmont Natural Gas are current as of 2011. This was determined to be the most accurate publicly available revenue estimate through consultation with a company representative.

South Carolina Natural Gas Utility Market Share - Revenue, in Dollars (2012)



Data Source: U.S. Energy Information Administration, EIA-176

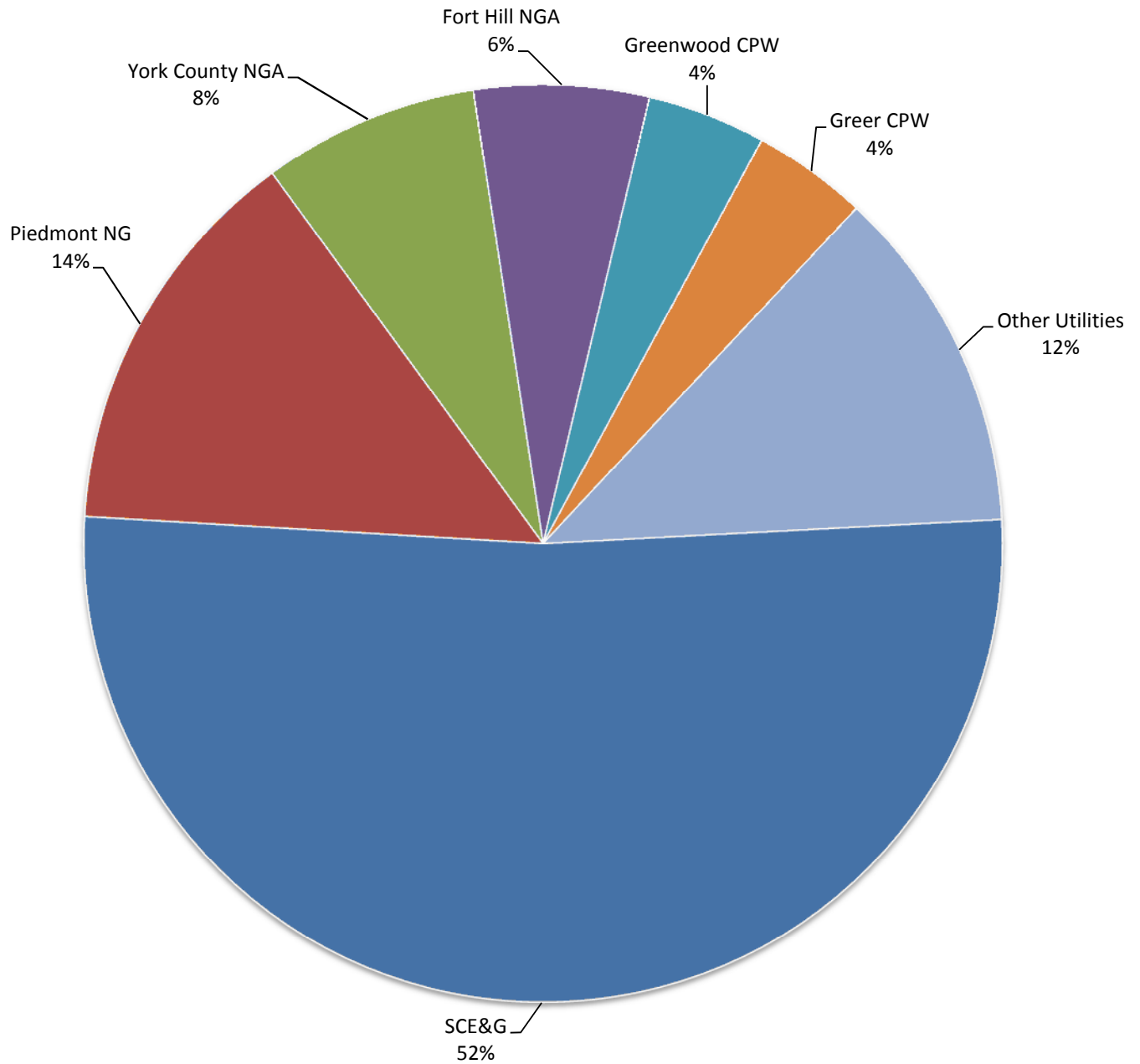
16. Natural Gas Sales (2012)

	Residential Sales (kcf)	RANK	Commercial Sales (kcf)	RANK	Industrial Sales (kcf)	RANK
Bamberg Board of Public Works	29,806	15	32,573	14	98,313	15
Bennettsville, City of	141,045	13	55,459	12	119,615	14
Chester County Natural Gas Authority	290,213	9	104,879	10	2,927,926	2
Clinton-Newberry Natural Gas Authority	483,280	7	314,625	7	1,014,892	8
Fort Hill Natural Gas Authority	1,476,729	4	1,379,270	3	2,029,893	6
Fountain Inn Natural Gas	282,451	10	39,426	13	325,438	13
Greenwood Commission of Public Works	560,224	6	424,248	5	2,324,722	4
Greer Commission of Public Works	686,981	5	416,983	6	2,110,091	5
Laurens Commission of Public Works	205,087	12	78,673	11	350,145	11
Orangeburg Department of Public Utilities	290,899	8	202,793	8	559,135	10
Piedmont Natural Gas	5,680,385	2	3,785,593	2	1,653,159	7
South Carolina Electric and Gas Co.	10,055,702	1	11,551,411	1	19,024,029	1
Union, City of	240,932	11	180,531	9	893,124	9
Winnsboro, Town of	73,722	14	16,823	15	333,782	12
York County Natural Gas Authority	2,336,348	3	826,113	4	2,871,742	3

	Power Plant Sales (kcf)	RANK	Vehicle Sales (kcf)	RANK	Total Sales (kcf)	RANK
Bamberg Board of Public Works	-	-	-	-	160,692	15
Bennettsville, City of	-	-	-	-	316,119	14
Chester County Natural Gas Authority	-	-	28	4	3,323,046	5
Clinton-Newberry Natural Gas Authority	-	-	-	-	1,812,797	8
Fort Hill Natural Gas Authority	-	-	639	2	4,886,531	4
Fountain Inn Natural Gas	-	-	-	-	647,315	11
Greenwood Commission of Public Works	-	-	-	-	3,309,194	6
Greer Commission of Public Works	-	-	-	-	3,214,055	7
Laurens Commission of Public Works	-	-	-	-	633,905	12
Orangeburg Department of Public Utilities	3,219	3	-	-	1,056,046	10
Piedmont Natural Gas ³	242,589	2	326	3	11,362,052	2
South Carolina Electric and Gas Co.	428,021	1	-	-	41,059,163	1
Union, City of	-	-	-	-	1,314,587	9
Winnsboro, Town of	-	-	-	-	424,327	13
York County Natural Gas Authority	-	-	3,227	1	6,037,430	3

³ Total power plant sales for Piedmont Natural Gas are current as of 2011. This was determined to be the most accurate sales estimate through consultation with a company representative.

South Carolina Natural Gas Utility Market Share - Sales, in Cubic Feet (2012)



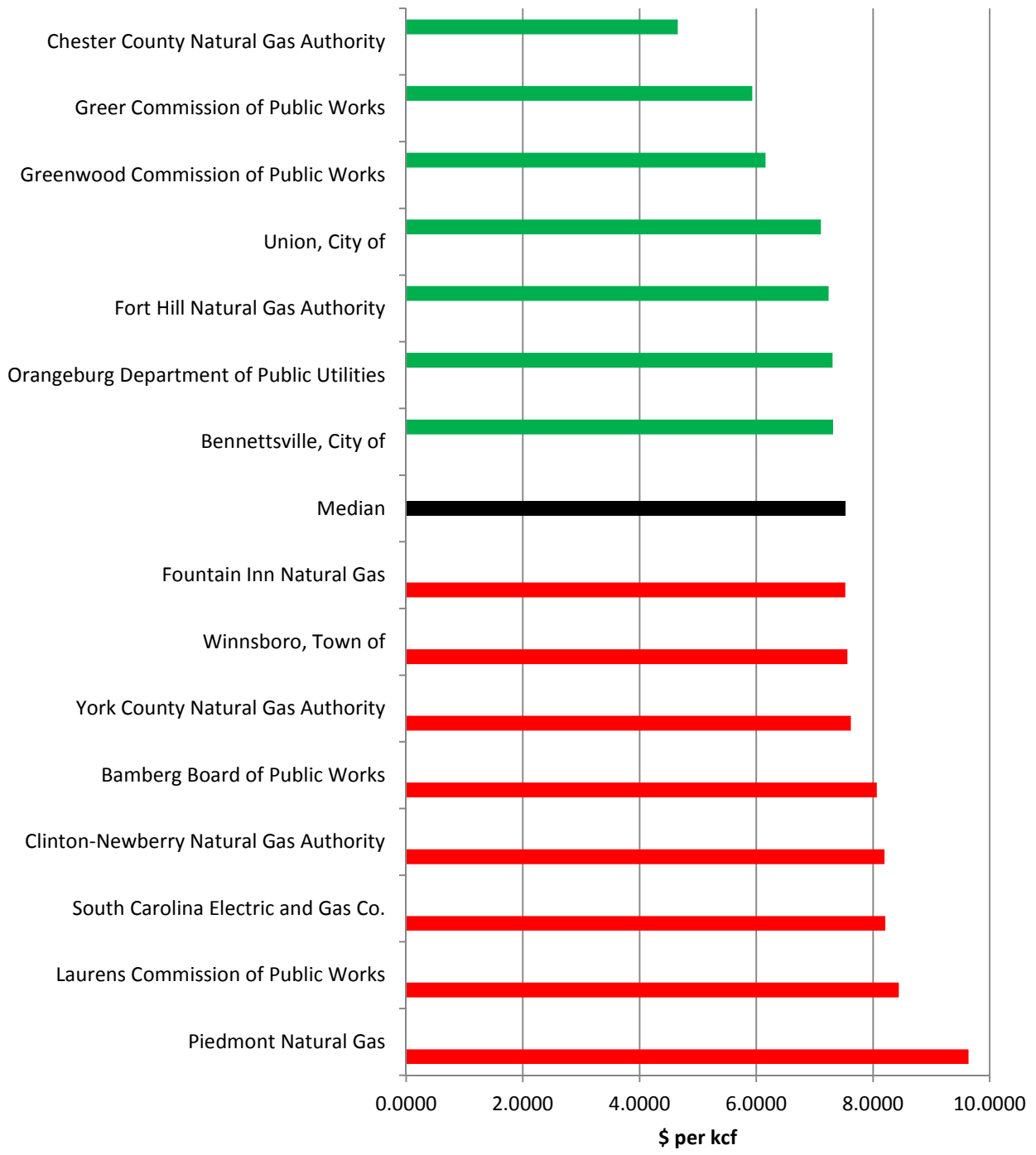
Data source: U.S. Energy Information Administration, EIA-176

17. Average Revenue per Natural Gas Customer (2012)

	Average Revenue per Residential Customer (\$ per kcf)	RANK	Average Revenue per Commercial Customer (\$ per kcf)	RANK	Average Revenue per Industrial Customer (\$ per kcf)	RANK
Bamberg Board of Public Works	12.4873	7	9.6737	7	6.1874	2
Bennettsville, City of	8.2800	15	8.2800	14	5.7251	5
Chester County Natural Gas Authority	12.1239	8	11.8201	2	3.6565	14
Clinton-Newberry Natural Gas Authority	12.1003	9	9.2913	8	5.9963	4
Fort Hill Natural Gas Authority	10.5882	12	6.8943	15	5.0345	8
Fountain Inn Natural Gas	9.0044	14	8.6988	12	6.0940	3
Greenwood Commission of Public Works	12.7747	5	8.8095	11	4.0796	12
Greer Commission of Public Works	12.6709	6	11.4372	3	2.6497	15
Laurens Commission of Public Works	14.2313	3	12.8690	1	4.0586	13
Orangeburg Department of Public Utilities	9.5783	13	9.1114	9	5.4759	6
Piedmont Natural Gas	11.2816	10	8.8928	10	6.3051	1
South Carolina Electric and Gas Co.	15.6777	2	8.4843	13	4.1768	10
Union, City of	13.4167	4	10.4310	4	4.7310	9
Winnsboro, Town of	17.1847	1	10.1448	5	5.3031	7
York County Natural Gas Authority	10.9719	11	10.0664	6	4.1747	11

	Average Revenue per Power Plant (\$ per kcf)	RANK	Average Revenue per Vehicle (\$ per kcf)	RANK	Total Average Revenue per Customer (\$ per kcf)	RANK
Bamberg Board of Public Works	-	-	-	-	8.0626	5
Bennettsville, City of	-	-	-	-	7.3133	9
Chester County Natural Gas Authority	-	-	8.8929	3	4.6537	15
Clinton-Newberry Natural Gas Authority	-	-	-	-	8.1954	4
Fort Hill Natural Gas Authority	-	-	12.1565	2	7.2387	11
Fountain Inn Natural Gas	-	-	-	-	7.5226	8
Greenwood Commission of Public Works	-	-	-	-	6.1580	13
Greer Commission of Public Works	-	-	-	-	5.9317	14
Laurens Commission of Public Works	-	-	-	-	8.4432	2
Orangeburg Department of Public Utilities	6.5163	1	-	-	7.3073	10
Piedmont Natural Gas	5.3005	2	6.6564	4	9.6338	1
South Carolina Electric and Gas Co.	4.6770	3	-	-	8.2105	3
Union, City of	-	-	-	-	7.1057	12
Winnsboro, Town of	-	-	-	-	7.5594	7
York County Natural Gas Authority	-	-	18.6997	1	7.6190	6

South Carolina Natural Gas Utilities
Average Revenue per Customer per Thousand Cubic Feet (2012)



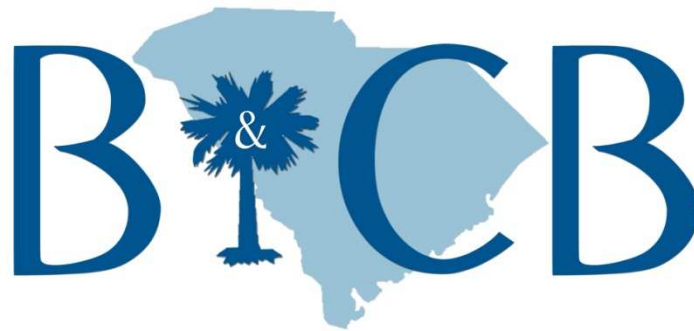
Data source: U.S. Energy Information Administration, EIA-176

18. Natural Gas Demand Side Management Programs (2012)

South Carolina Natural Gas Utilities: Summary of Demand-Side Management (2012)									
Natural Gas Utility Name	Ownership	Energy Efficiency				Load Management	Public Information		
		New Building Efficiency Incentives	On-Site Energy Assessments	Low-Income Efficiency and Weatherization Assistance	Efficient Appliance or Equipment Incentives	Interruptible Service Incentives	Web-Based Customer Tools and Tips	Direct-to-Customer Communication	Public Campaigns
Bamberg Board of Public Works	Municipal								
City of Bennettsville	Municipal								
Chester County Natural Gas Authority	Municipal				✓				
Clinton-Newberry Natural Gas Authority	Municipal				✓				
Fort Hill Natural Gas Authority	Municipal				✓	✓			
Fountain Inn Natural Gas	Municipal								
Greenwood Commission of Public Works	Municipal								
Greer Commission of Public Works	Municipal		✓				✓		
Laurens Commission of Public Works	Municipal								
Orangeburg Department of Public Utilities	Municipal				✓	✓			
Piedmont Natural Gas Company	Investor-Owned			✓	✓			✓	
South Carolina Electric & Gas Company	Investor-Owned	✓	✓				✓	✓	✓
City of Union	Municipal								
Town of Winnsboro	Municipal								
York County Natural Gas Authority	Municipal						✓		

Source: South Carolina Energy Office, annual survey of utilities.

SC ENERGY OFFICE



SC BUDGET AND CONTROL BOARD

SOUTH CAROLINA

BUDGET AND CONTROL BOARD

Nikki R. Haley, Chair

Governor

Curtis M. Loftis, Jr.

State Treasurer

Richard Eckstrom, CPA

Comptroller General

Hugh K. Leatherman, Sr.

Chair, Senate Finance Committee

W. Brian White

Chair, House Ways and Means Committee

Marcia Adams

Executive Director