

# **South Carolina Electric Utilities**

Updated June 2017

This list of electric utility providers in South Carolina is to help South Carolina residents identify utility services. If you are unsure which electric utility services your area please reference the map on the last page of this document. If you have a complaint, please contact the utility and ask to speak with a customer service representative. If you are not satisfied with the company's response or assistance, then please contact the Office of Regulatory Staff Consumer Services Division by phone at 803-737-5230 (Columbia, SC) or 1-800-922-1531 (toll-free within South Carolina) between 8:30 a.m. to 5:00 p.m. Monday through Friday (except state holidays). You may also contact the Consumer Services Division by completing the [Online Consumer Complaint/Inquiry Form](#). For corrections or updates to this list of electric utility providers, please contact the [South Carolina Energy Office](#).

## City of Abbeville Public Utilities

(864) 366-5058

## Aiken Electric Cooperative

(803) 649-6245	Aiken Office
(800) 922-1262	Aiken Office—Toll Free
(803) 637-3189	Edgefield Office
(800) 290-0413	Edgefield Office—Toll Free
(803) 652-2226	New Ellenton Office
(803) 247-2121	North Office
(800) 453-1934	North Office—Toll Free

## City of Bamberg Board of Public Works

(803) 245-5128

## City of Bennettsville

(803) 479-9001 Ext. 330 Utilities Operations Manager

## Berkley Electric Cooperative

(843) 884-7525	Awendaw District Office
(843) 553-5020	Goose Creek District Office
(843) 559-2458	Johns Island District Office
(843) 761-8200	Moncks Corner District Office

## Black River Electric Cooperative

(803) 469-8060	Sumter Branch Office
(803) 432-9854	Camden Branch Office

## Blue Ridge Electric Cooperative

(864) 647-2005	
(864) 878-6326	
(800) 240-3400	Toll Free

## Broad River Electric Cooperative

(864) 489-5737	Cherokee County
(866) 687-2667	Other Counties, Toll Free

## City of Camden

(803) 432-2421

## City of Clinton Public Works

(864) 833-7520

## Coastal Electric Cooperative

(843) 538-5700

## Duke Energy Carolinas

(800) 777-9898

[Duke Energy Progress](#)

(800) 452-2777

[Easley Combined Utilities](#)

(864) 859-4013

[Edisto Electric Cooperative](#)

(803) 245-5141

[Fairfield Electric Cooperative](#)

(803) 754-0153

Blythewood Office

(803) 635-4621

Winnsboro Office

(800) 628-0336

Toll Free

[Gaffney Board of Public Works](#)

(864) 488-8800

[City of Georgetown Electric Utility Department](#)

(843) 545-4600

[Greenwood Commission of Public Works](#)

(864) 942-8100

(877) 622-3360

Toll Free

[Greer Commission of Public Works](#)

(864) 848-5500

[Horry Electric Cooperative](#)

(843) 369-2211

Main Office

(843) 650-7207

Socastee Office

[Laurens Commission of Public Works](#)

(864) 681-4300

[Laurens Electric Cooperative](#)

(800) 942-3141

Toll Free

[Little River Electric Cooperative](#)

(864) 366-2141

Abbeville Office

(864) 391-2840

McCormick Office

[Lockhart Power Company](#)

(864) 545-2211

Main Office

(800) 368-1289

Toll Free

[Lynches River Electric Cooperative](#)

(843) 672-6111

(800) 922-3486

Toll Free

[Marlboro Electric Cooperative](#)

(843) 479-3855

(800) 922-9174

Toll Free

[McCormick Commission of Public Works](#)

(864) 852-2225

[Mid-Carolina Electric Cooperative](#)

(803) 749-6400

Customer Service

(888) 813-8000

Toll Free

[Newberry Electric Cooperative](#)

(803) 276-1121

[City of Newberry Utilities](#)

(803) 321-1018

[Orangeburg Department of Public Utilities](#)

(803) 268-4000

[Palmetto Electric Cooperative](#)

(803) 943-2211

Hampton

(843) 681-5551 Hilton Head  
(843) 208-5551 New River  
(843) 726-5551 Ridgeland  
(800) 922-5551 Toll Free

[Pee Dee Electric Cooperative](#)

(843) 665-4070  
(866) 747-0060 Toll Free

[Town of Prosperity](#)

(803) 364-2622

[City of Rock Hill Utilities Department](#)

(803) 325-2500

[Santee Cooper](#)

(843) 761-8000 Mocks Corner Office  
(800) 804-7424 Toll Free

[Santee Electric Cooperative](#)

(843) 546-4521 Georgetown Office  
(843) 558-3313 Hemingway Office  
(843) 355-6187 Kingstree Office  
(843) 374-3000 Lake City Office  
(803) 473-4036 Manning Office  
(800) 922-1604 Toll Free

[City of Seneca Light and Water](#)

(864) 885-2723

[South Carolina Electric and Gas](#)

(800) 251-7234

[Tri-County Electric Cooperative](#)

(877) 874-1215 Toll Free

[City of Union Utility Department](#)

(864) 429-1721 Utilities Director

[Westminster Commission of Public Works](#)

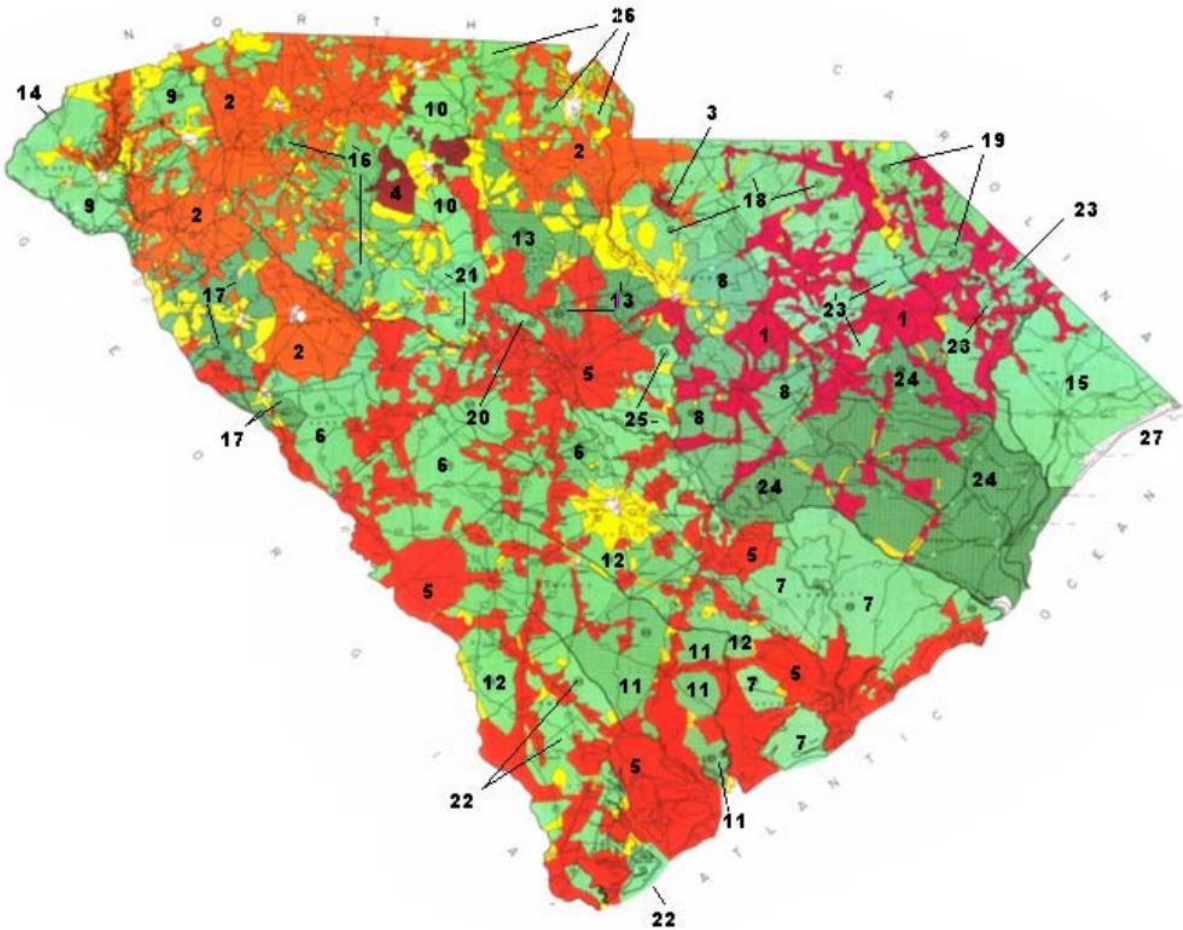
(864) 647-3200

[Town of Winnsboro](#)

(803) 635-4041 Ext. 113 or 109

[York Electric Cooperative](#)

(803) 684-4248 Main Office  
(803) 548-4244 Fort Mill Branch Office



- |    |                                       |    |   |
|----|---------------------------------------|----|---|
| 1  | Progress Energy                       | 16 | Laurens Electric Cooperative            |
| 2  | Duke Power Company                    | 17 | Little River Electric Cooperative       |
| 3  | Heath Springs Light & Power           | 18 | Lynches Electric Cooperative            |
| 4  | Lockhart Power Company                | 19 | Marlboro Electric Cooperative           |
| 5  | South Carolina Electric & Gas Company | 20 | Mid-Carolina Electric Cooperative       |
| 6  | Aiken Electric Cooperative            | 21 | Newberry Electric Cooperative           |
| 7  | Berkeley Electric Cooperative         | 22 | Palmetto Electric Cooperative           |
| 8  | Black River Electric Cooperative      | 23 | Pee Dee Electric Cooperative            |
| 9  | Blue Ridge Electric Cooperative       | 24 | Santee Electric Cooperative             |
| 10 | Broad River Electric Cooperative      | 25 | Tri-County Electric Cooperative         |
| 11 | Coastal Electric Cooperative          | 26 | York Electric Cooperative               |
| 12 | Edisto Electric Cooperative           |    | Unassigned Area                         |
| 13 | Fairfield Electric Cooperative        | 27 | South Carolina Public Service Authority |
| 14 | Haywood Electric Cooperative          |    | Municipally Owned Electric System       |
| 15 | Horry Electric Cooperative            |    |   |